

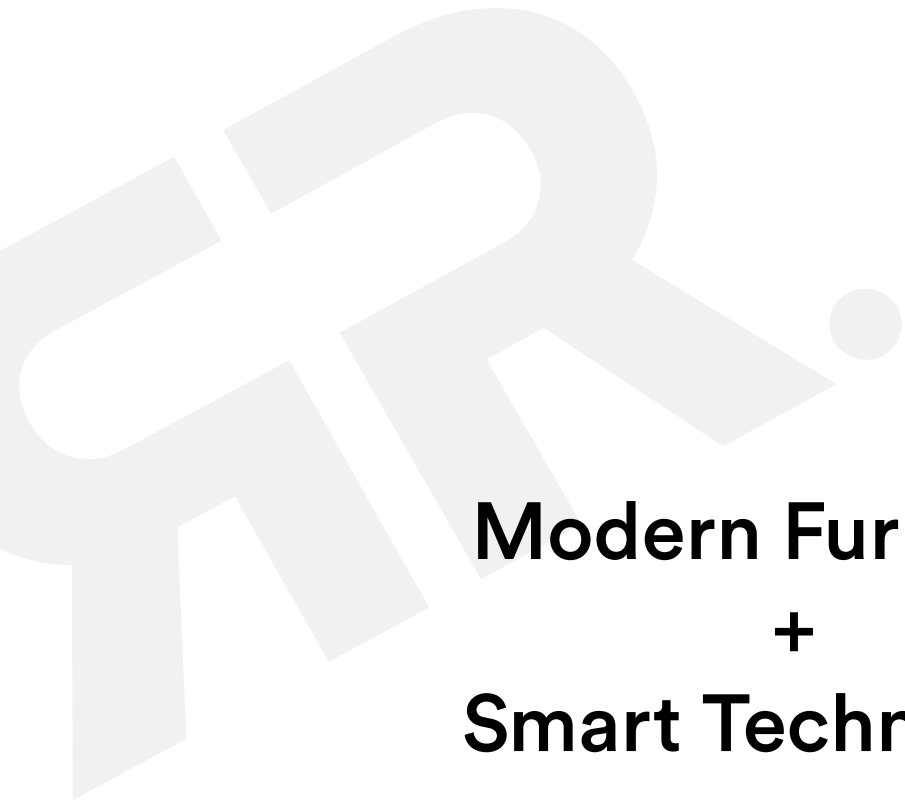


**ARCHITECTURALS  
&  
RECEPTIONS** 

**Rockworth<sup>®</sup>**



**Modern Furniture  
+  
Smart Technology  
+  
Architectural Systems  
=  
Rockworth<sup>®</sup>**



THAT ENHANCE BUSINESSES  
BY SUPPORTING PEOPLE  
TO ACCESS THEIR  
BEST WORK.

---

The Age Of  
**FLEXIBILITY**

**WORKSPACE  
SUPPORTING PEOPLE**

Over the past two decades, new technologies are driving the global change forward and continue to transform the way organizations work.

Nowadays, people can work more flexibly than ever before, new work styles have emerged that giving people choice over where, when and how they get their work done but despite all of this change.

...the role of making performing workspace for people remains essential for business success.

AFTER

**50**

YEARS



IN BUSINESS  
OUR PROVEN TRACK RECORD IS  
SOMETHING WE ARE INCREDIBLY PROUD OF.

# INCREDIBLY PROUD OF...

**900**  
Members of Staff  
Internationally

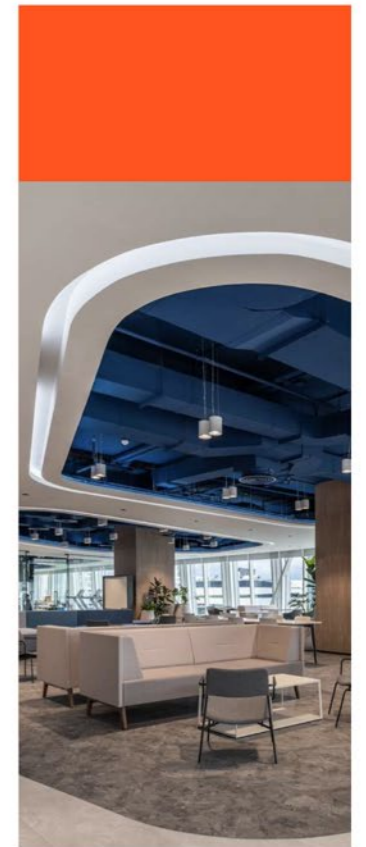
**50**  
Years of  
Experience

**27**  
Countries  
Contracted  
Partner



**17**  
Global Locations  
Showroom

**1,972**  
Trust Heritage



**90,000m<sup>2</sup>**  
Manufacturing  
Facilities

# 'SpaceWorks'

Office is the place where idea, creativity, innovation and success become real.

From here, we started the concept of 'SpaceWorks', the science of integrated solutions to create a modern office. It is a place where people work, meet and connect.



The way we work has changed. From the rise of mobile knowledge workers to generational changes and technological advances, many forces are continuously impacting how and where we work.

Nowadays, people can work more flexibly than ever before. To stay relevant in this fast-paced world, our work environments need to change.

The concept of 'SpaceWorks' will be the solution to create a Modern working environment by merging the modern spaces with the digital solutions, companies can give their employee the flexibility to work in the way that they need. Our variety of furnitures along with technology solutions designed to promote communication, movement and employee health.

Our solutions also support your people working on a diverse range of activities, from deep thinking to knowledge sharing and collaboration. As a result, the organization, can enhance the experience of the employees, leading to better them collaboration, more innovation, and more knowledge-sharing while decreasing office space cost which in turn boosts business performance.

WELCOME TO A

# MODERN OFFICE

▼ we're entering the era of the modern smart office.

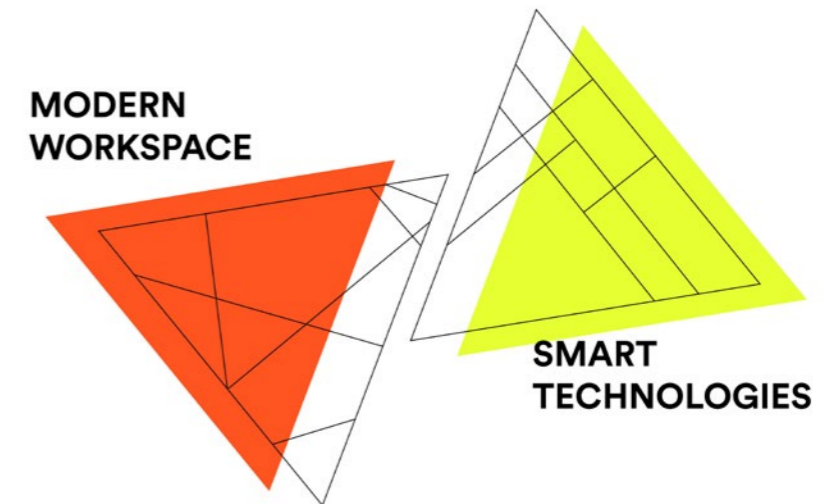
**BUT WHAT DOES IT REALLY MEAN?**

**WHAT MAKES AN OFFICE 'SMART'?**

Today's employees want to work in a way that suits them. Sitting or standing, a bustling central workspace or a smaller quiet space, indoor and outdoor areas, people want to move seamlessly between the buildings and spaces. Forward-thinking companies are creating flexible and modern spaces to increase collaboration and productivity. But they can do more. The office of the future is not just a beautiful building. It is a modern smart office.

It's about an integrated environment that combines thoughtful modern workspace and smart technology; forming a culture that enhanced productivity and employee experience to

▼ **WORK smarter, better, and faster.**



Modern workspaces are designed to provide a variety of work setting and areas of an office that allow employees to choose based on a diverse range of tasks throughout the day, from deep thinking to knowledge sharing, collaboration and everything in between.

A smart Office refers to the use of connected technologies to support modern workspace in order to engage employees with their work environment.

# THE IDEA

OF A NEW OFFICE

## A GUIDE TO CREATE INSPIRING WORKSPACE

### FURNITURE

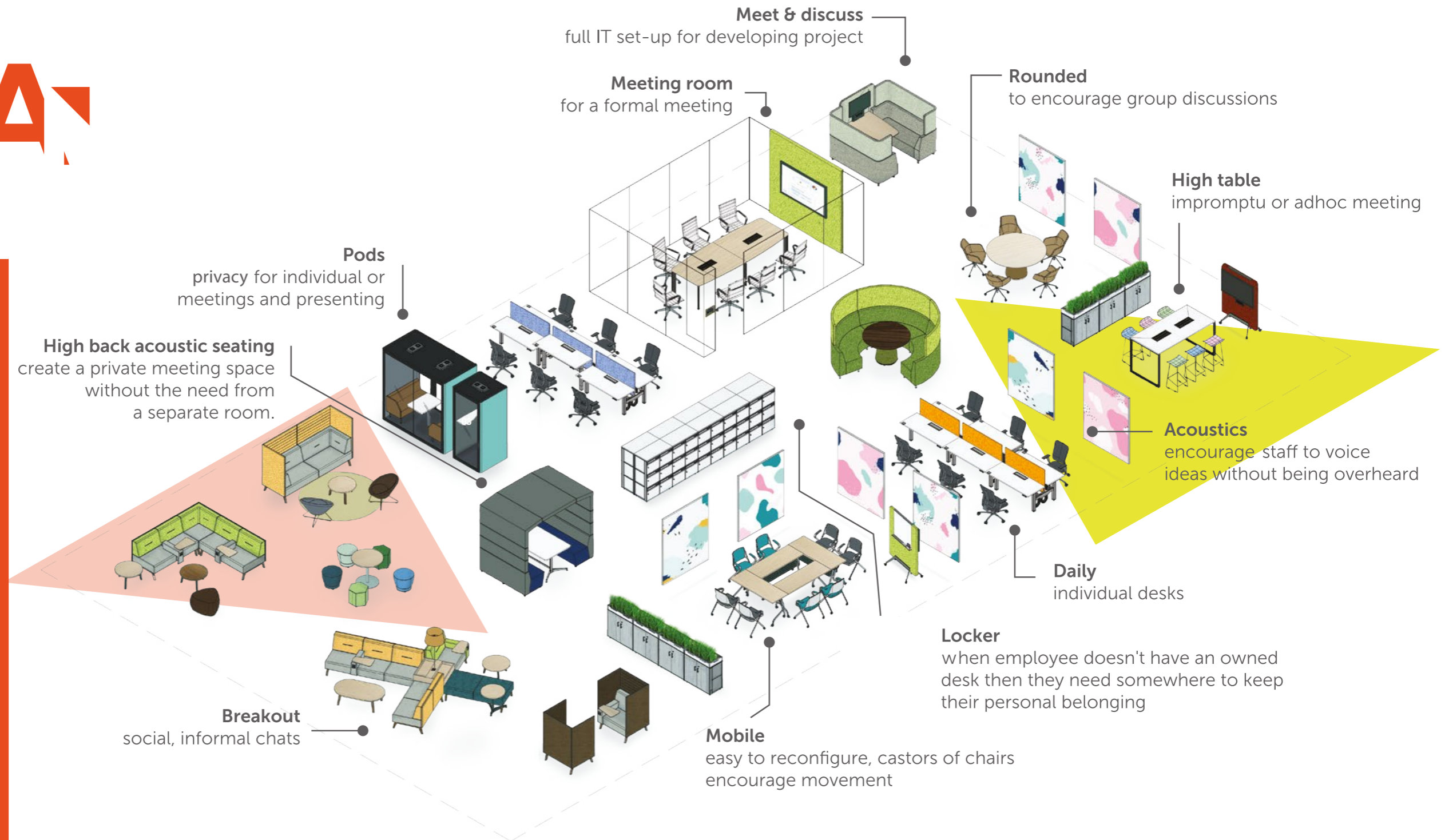
CREATE MODERN WORKSPACE THAT SUPPORT COLLABORATION, FOCUS, INNOVATION, LEARNING AND SOCIALIZING.

### ARCHITECTURAL & ACOUSTIC SYSTEMS

CREATE FLEXIBLE WORKSPACE THAT ADAPT AND SUPPORT PRIVACY.

### SMART TECHNOLOGY

CREATE SMART WORKSPACE THAT SEAMLESS INTEGRATION OF EMPLOYEE, WORKSPACE AND TECHNOLOGY TO ENSURE SPACE OPERATE EFFICIENTLY



“  
**ARCHITECTURALS**  
&  
**RECEPTIONS**  
”

MODULAR WALL

ACOUSTIC SOLUTIONS WALL & CARPET

RECEPTIONS

Designed to fit the needs of today's open-plan workspaces, our wall systems and acoustic solutions can create private space that offers privacy and effectively reduce noise and reverberation.



# Scene

Modular Wall

SCENE is more than just an elegant glass partition; it is also an economical solution for your working environment. The minimal profile height and seamless connection with other SCENE solutions, create a high quality transparent aesthetic. Innovative system combining aesthetic appeal, unique design and high performance. Performance for acoustic insulation; for fire resistance; for structural strength and stability.







**Design**

Minimalistic super slim design  
 Robustness of mechanism with maximum height of 3 meters  
 Luxury finish with super clear polycarbonate glass joiner  
 Both full framed and frameless design available

**Flexibility**

Fully adjustable to floor & ceiling tolerance up to +-15mm  
 Seamless connections between glass panels & service box

**Superior Quality**

Sound rated door available  
 All hardware are accordance to EN standard

**Efficiency**

We understand the importance of timeline.  
 SCENE will help the installation time to be faster and easier  
 with our First patented front-loading glass self  
 adjusting partition system.

**Safety**

With front-loading glass system the installer can handle glass  
 with ease, reducing risk of injury or glass breaking.

DOORS & PANELS



**SLIDING DOORS**

- Wood
- Glass

**SWING DOORS**

- WOOD
- Metal Frame + Glazed

**GLASS PANELS**

- Full-Height

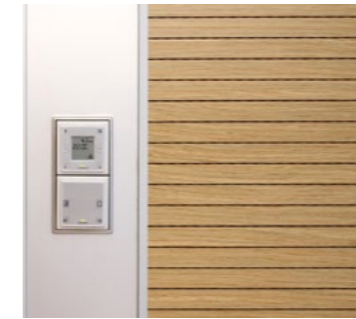
**SOLID PANELS**

- Full-Height
- Full-Height with Transom
- Multi-Segment

**GLASS CORNER**

- 2-Way 90 degree
- 3-Way 90 degree

**FRAME COLOR OPTIONS**



**TECHNOLOGY**

Connections between glass panels & service can also be performed without profiles by gluing the glass with a special strong bonding silicone adhesive.



# Flex

Modular Wall

FLEX is a fully de-mountable, interior wall and full height storage system, offering a modular, systems solution to office partitioning and storage requirements.

The modular construction and co-ordinated finishes of FLEX, facilitates the suiting of all interior walls including, structural / masonry cladding, solid and glazed partitions, door, single and double sided storage walls. All frames and panels are factory finished allowing fast, simple installation and reconfiguration.

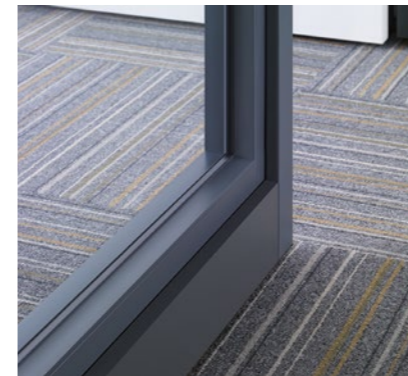
## FLEXIBLE

The ease with which FLEX can be reconfigured, allows a company to operate at peak efficiency as internal moves or re-allocation of space that would, (because of cost and disturbance) normally be left until absolutely critical, can be achieved with minimal disturbance and at very little cost.

## FUNCTION

The combination of solid, glazed or half glazed partitions with the numerous storage options.





- 1. DOOR HANDLE
- 2. DOUBLE DOOR PANEL
- 3. SINGLE GLASS
- 4. STORAGE WALLS

FLEX storage walls are the most efficient use of vertical storage space, giving 20-30% saving in floor area.

- 5. CABLE MANAGEMENT

All partitions and storage wall units feature a full cable management system, with optional power, data and communication outlets.

# Florplan

Acoustic Carpet Tile

FlorPlan carpet tile is a high performance, eco-friendly carpet tile. It consistently outperforms PVC-backed carpet tiles in many respects. Traditionally carpet tiles are backed with PVC. But, of particular concern, PVC has increasingly been viewed as undesirable for its health risks as it contains stabilizers, chemicals such as lead and plasticizer, all of which may be released into the indoor environment throughout the life of the carpet. Our Florplan® carpet tiles with EcoStep backing which is made of regenerated PET fibers meets Carpet & Rug Institute's Green Label Plus program, contributing to healthy indoor environment..



As a consequence of our environmental product design, Florplan® carpet has been granted certifications from major environmental institutions in Australia, Singapore and U.S.A. as an environmentally-friendly product. Users of Florplan® carpet may earn environmental points from LEED (Leadership in Energy and Environmental Design). for their projects.

OurFlorplan carpet tiles are backed with EcoStep®, an innovative cushion backing developed by Feltech. EcoStep® is a nonwoven felt made of 85% recycled PET fibers regenerated from discarded plastic drinking water bottles reclaimed as post-consumer waste. The fiber-bonded backing provides an excellent cushion effect for underfoot comfort and reduces carpet fatigue enabling carpets to retain their new look longer. The product is uniquely ours and represents our innovative approach.



## ACOUSTIC FLOOR FLOORPLAN

### Acoustical values

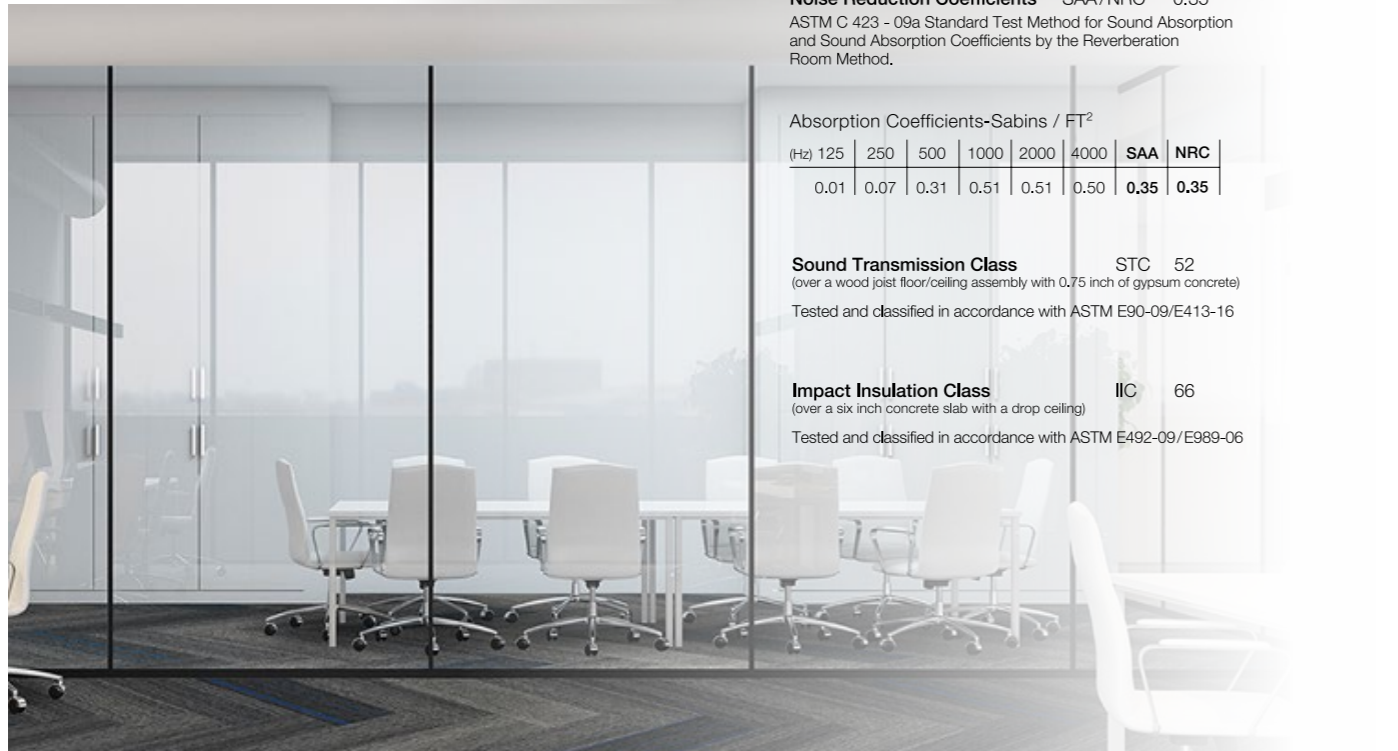
**Noise Reduction Coefficients** SAA/NRC 0.35  
 ASTM C 423 - 09a Standard Test Method for Sound Absorption and Sound Absorption Coefficients by the Reverberation Room Method.

Absorption Coefficients-Sabins / FT<sup>2</sup>

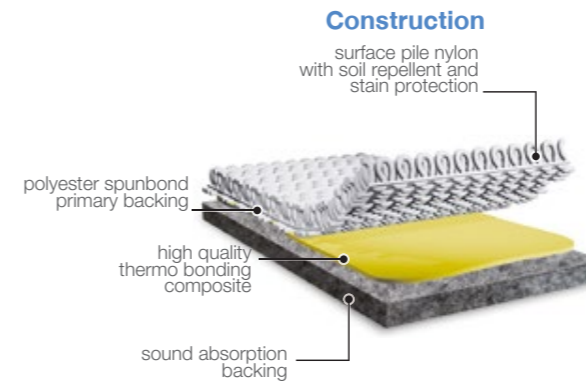
(Hz)	125	250	500	1000	2000	4000	SAA	NRC
	0.01	0.07	0.31	0.51	0.51	0.50	<b>0.35</b>	<b>0.35</b>

**Sound Transmission Class** STC 52  
 (over a wood joist floor/ceiling assembly with 0.75 inch of gypsum concrete)  
 Tested and classified in accordance with ASTM E90-09/E413-16

**Impact Insulation Class** IIC 66  
 (over a six inch concrete slab with a drop ceiling)  
 Tested and classified in accordance with ASTM E492-09/E989-06



ecostep®



ecostep® marks a new era in the development of high performance and Environmentally advanced carpet tile secondary cushion backing

### Acoustically superior

ecostep® is a sound absorption backing with excellent acoustic and noise reduction properties, providing a quieter environment.

### High underfoot comfort & Excellent appearance retention

ecostep® is a cushion backing that effectively absorbs foot impact giving a luxurious experience compared with hard backings. ecostep® extends the life and appearance of the carpet by absorbing the impact of foot traffic.

### Superior breathability

ecostep® is up to 40 times more permeable than most other modular carpet tiles, offering superior breathability.

### 80% post-consumer recycled content

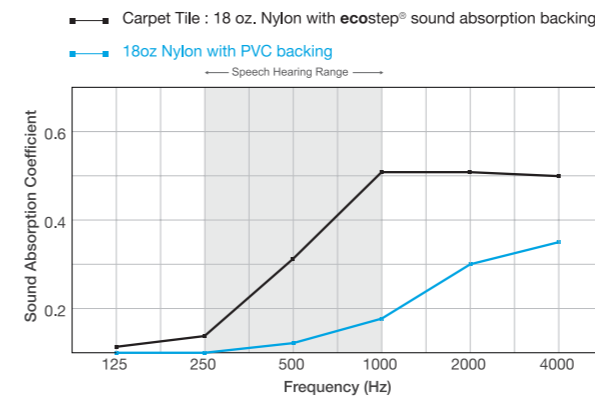
Every square meter of ecostep® diverts 34 PET (600ml) drinking bottles from landfill. Its recycled content meets the USGBC, LEED Criteria MR 4.1 and 4.2 Recycled content.

### Improved indoor air quality

ecostep® has low VOCs providing a safer atmosphere and complies with the Indoor Air Quality monitoring program by the Carpet & Rug Institute (CRI) and meet LEED criteria, EQ3.2 Indoor Air Quality.

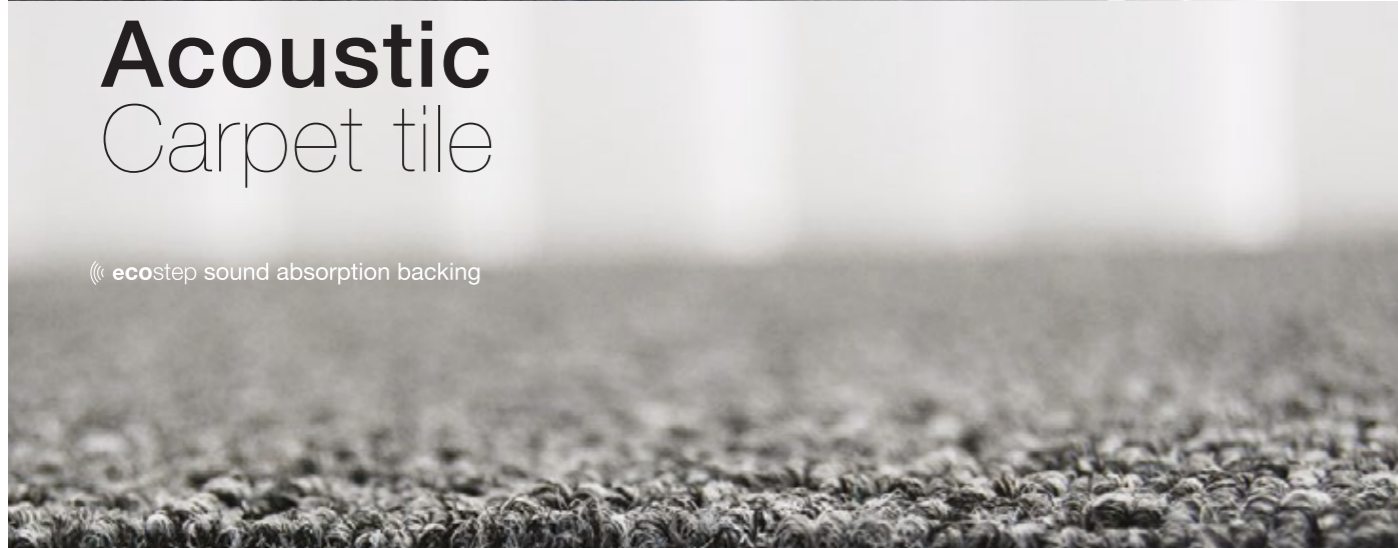
### No PVC, fiberglass or bitumen used

florplan® carpet tile is stabilised using a special non woven backing process creating dimensional stability without the use of harmful, polluting and environmentally damaging materials.

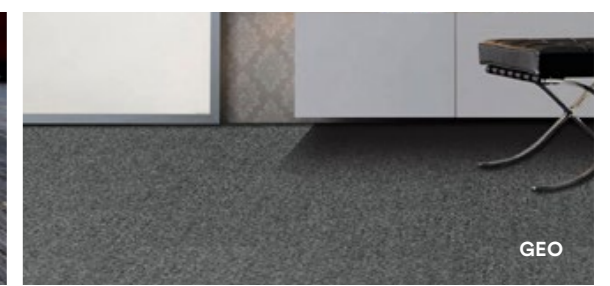
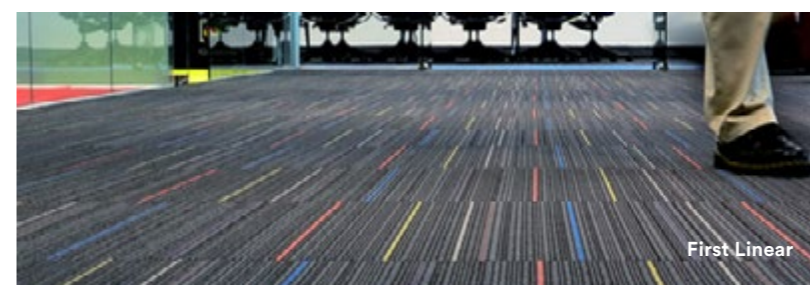
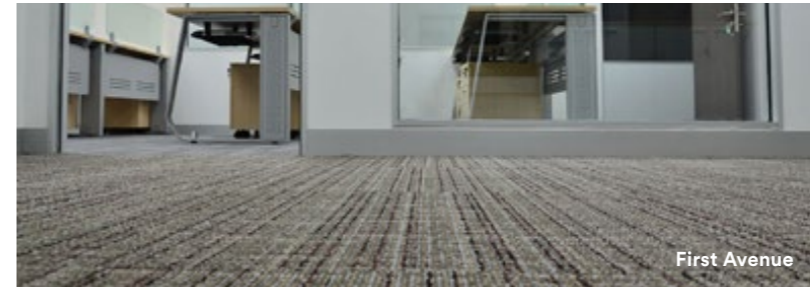
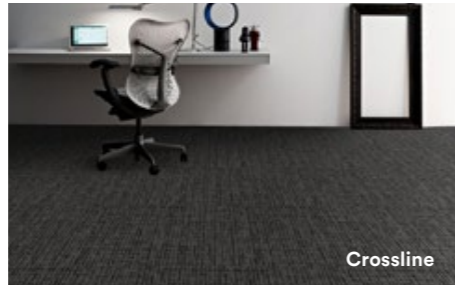


# Acoustic Carpet tile

ecostep sound absorption backing







Product specifications (Nylon)

Construction	Textured Tufted Loop Pile
Face Fiber	Nylon BCF with anti static filaments
Dyed Method	Solution Dyed
Gauge	1/10   1/12
Pile Thickness	4 mm +/-10%
Total Thickness	8 mm +/-10%
Tuft Density	200,000 / m2
Primary Backing	100% non woven synthetic spunbond
Secondary Backing	EcoStep, sound absorption backing (80% recycled PET bottles)
Tile Size	500 x 500 mm
Custom Size	250 x 1000, 1000 x 1000 mm 500 x 1000, 600 x 600 mm

Performance

Traffic Classification	Heavy Contract
Castor Chair Rating	BS EN 985, > 2.4 continuous use
Hexapod Tumble drum Tester	ASTM D 5252, > 3.5 at 12,000 cycles
Dimensional Stability	BS EN 986, < 0.2%
Electrostatic Propensity	AATCC 134, <-3.0 Kv
Light Fastness	ISO 105 B02, min 6
Thermal Resistance	0.17 m2 K/W.

Flammability

Flooring radiant test	ASTM E648, Class 1
Smoke density	ASTM E 662, < 450 (flaming mode)
Hot Metal Nut	BS 4790, Low radius effects of ignition

Acoustic Performance

Sound Absorption	ASTM C423-09a					
Frequency (Hz)	250	500	1000	2000	4000	NRC
Noise Reduciton Coefficient (NRC)	0.07	0.31	0.51	0.51	0.50	0.35
Impact Sound Insulation Class (IIC)	ASTM E5492-09,		IIC	66		
Sound Tranmission Class (STC)	ASTM E90-09,		STC	52		

Sustainability

Indoor Air Quality	U.S. Green Building Council (LEED) & CRI's Green Label Plus compliant for VOC's emission rate limits.
Accreditaion	<ul style="list-style-type: none"> <li>Australian Carpet Classification Scheme (ACCS) : Environmental Classification Schem, ECS Level 4-maximum points.</li> <li>Singapore Green Label-Environmentally Friendly carpet certificate # 039-009.</li> <li>Manufactured under management system certified as complying with ISO 9001 &amp; ISO 14001</li> </ul>
PVC Minimization	100% PVC and bitumen free.
Recycled Content	Post-Consumer recycled content minimum 25% by weight of product.

Product specifications (Polypropylene)

Construction	Textured Tufted Loop Pile
Face Fiber	100% Polypropylene BCF
Dyed Method	Solution Dyed
Gauge	1/10
pile Treatment	UV Protection
Pile Thickness	4 mm +/-10%
Total Thickness	8 mm +/-10%
Tuft Density	200,000 / m2
Primary Backing	100% non woven synthetic spunbond
Secondary Backing	EcoStep, sound absorption backing (80% recycled PET bottles)
Tile Size	600 x 600 mm

Performance

Traffic Classification	General Contract
Castor Chair Rating	BS EN 985, > 2.4 continuous use
Dimensional Stability	BS EN 986, < 0.2%
Electrostatic Propensity	AATCC 134, < -3Kv
Light Fastness	ISO 105 B02 min, 6
Thermal Resistance	0.17 m2 K/W
Flammability	Hot metal nut, BS 4790 Low radius effects of ignition

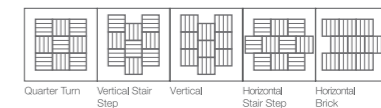
Acoustic Performance

Sound Absorption	ASTM C423-09a					
Frequency (Hz)	250	500	1000	2000	4000	NRC
Noise Reduction Coefficient (NRC)	0.07	0.31	0.51	0.51	0.50	0.35
Impact Sound Insulation Class (IIC)	ASTM E492-09,		IIC	66		
Sound Tranmission Class (STC)	ASTM E90-09,		STC	52		

Sustainability

Accreditation	Manufactured under management system certified as complying with ISO 9001 & ISO 14001
PVC Minimization	100% PVC and bitumen free.
Recycled Content	Post-Consumer recycled content minimum 25% by weight of product.

Installation Method



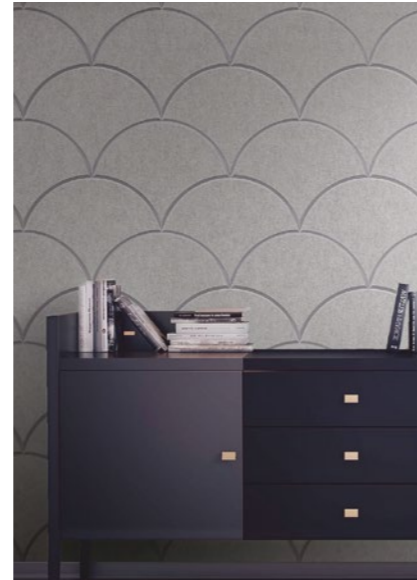
# Acoupanel

Acoustic Wall Panel

AcouPanel is an innovative, high-performance acoustic panel manufactured rigid to provide impact resistance ideal for wall and ceiling applications. Made of 100% polyester fibers with high content of regenerated fibers from post - consumer discarded plastic drinking water bottles. AcouPanel is available in five standard colours and can be supplied in standard size or custom-cut and in special shape to suit each individual requirements. AcouPanel is easy to install using adhesive on wall. Ceiling boards can be hung vertically or horizontally with hooks on joists.

AcouPanel Décor (design options)

AcouPanel is a unique acoustic product which combines superior acoustic performance with design options. With the latest digital printing technology, any pattern or image can be printed on the panel, offering you the flexibility to add visual effects to create a unique environment in your workplace





**ACOUSTIC PANEL**

rigid acoustic panel

acoupanel is a rigid panel made from 100% polyester fibers including 60% regenerated fibers made from post-consumer discarded PET drinking bottles.

acoupanel is superior in sound absorption (NRC 0.45-0.60); suitable for use on interior walls and for ceilings where noise reduction is desired. acoupanel is an innovative and unique acoustic product on to which any design or image can be printed providing you the flexibility to create a unique atmosphere in your workplace or home. What makes the acoupanel custom printing option highly attractive to designers is that it is a printing method that has minimal impact on the acoustic properties of the printed material. So with the custom printing and cutting service, there is no reason why spaces cannot be designed for the ear and the eye.

**AVAILABLE COLORS**



Description	AP12	AP24
Material	Polyester Fiber	Polyester Fiber
Weight	2400 g/m <sup>2</sup>	4800 g/m <sup>2</sup>
Density	200 kg/m <sup>3</sup>	200 kg/m <sup>3</sup>
Thickness	12 mm +/-10%	24 mm +/-10%
Size	1220x2440 mm	1220x2440 mm
ISO 717 Part 1 : Sound Transmission Class, STC	5	5
ISO 354 : Sound Absorption, NRC	0.45	0.60

Hz	Absorption coefficient						NRC
	125	250	500	1000	2000	4000	
<b>Ap 12</b>	0.06	0.02	0.23	0.61	0.89	0.95	<b>0.45</b>
<b>Ap 24</b>	0.02	0.57	0.41	0.58	0.87	0.85	<b>0.60</b>

ISO 105-B02-1994 Colour fastness to light	>6
AS/NZS 3837 Test for Heat and Smoke Release Rates	Group classification 3
ASTM E84 Flammability, Standard Test Method for Surface Burning Characteristics of Building	Class A
ASTM D629-99 Moisture Content	<0.10 % by Weight



**ACOUSTIC PANEL**

semi rigid acoustic panel

acoupanel 25 mm and 50 mm is semi rigid sound absorption wall and ceiling panel designed to reduce ambient noise and excessive reverberation. They can significantly reduce the amount of echo

creating acoustic balance across respectively all frequencies from low to high with NRC 0.75 and 0.90

They can be glued directly to any wall or ceiling horizontally and are offered in a standard flat surface panel or printed creating multiple aesthetic options for your acoustic treatment.



- (1) acoupanel (AP50) 50 mm, Black
- (2) acoupanel (AP25) 25 mm, White
- (3) acoupanel (AP25) printed 25 mm

Available colors  
Black, White, Printed

Description	AP25	AP50
Material	Polyester Fiber	Polyester Fiber
Weight	2400 g/m <sup>2</sup>	4800 g/m <sup>2</sup>
Density	100 kg/m <sup>3</sup>	100 kg/m <sup>3</sup>
Thickness	25 mm +/-10%	50 mm +/-10%
Size	1220x2440 mm	1220x2440 mm
ISO 717 Part 1 : Sound Transmission Class, STC	5	5
ISO 354 : Sound Absorption, NRC	0.75	0.90

Hz	Absorption coefficient						NRC
	125	250	500	1000	2000	4000	
<b>Ap 25</b>	0.23	0.35	0.67	0.93	1.06	0.94	<b>0.75</b>
<b>Ap 50</b>	0.22	0.63	0.95	0.98	0.98	0.93	<b>0.90</b>

ISO 105-B02-1994 Colour fastness to light	>6
AS/NZS 3837 Test for Heat and Smoke Release Rates	Group classification 3
ASTM D629-99 Moisture Content	<0.15 % by Weight

ACOUSTIC PANEL



ACOUSTIC PANEL



# Luna

## Receptions

LUNA has a double face, so it appears in two versions that express the product's versatility not only from a functional viewpoint but also in terms of appearance, thanks to the use of materials which are in some way the opposite of one another. The warmth of the wood finish sets off the technical look of the methacrylate.



LUNA makes use of its rhythm and modularity to furnish spaces both large and small. The height of 113 cm. favors personal inter relationships, and thanks to the straight modules in lengths of 100 and 160 cm. and the 60° and 90° curved models, it traces custommade geometries, creating solutions that are attractive, functional and re-configurable.



# Luna wood



1. To emphasize the roundness of the wood  
LUNA reception unit, aluminium - coloured horizontal profiles are inserted into the front panel.



2. The elegant wood version  
The elegant wood version has an acid - etched glass top matched with dark oak, light oak and cherry finish of the fronts, shelves and closing sides.



3. The system is completed with wire  
The system is completed with wire management, the shutter cabinet unit.

MELAMINE

FARIC

EDGE BANDING

HANDLE

METAL

LEATHER / VINYL

ACRYLIC

GLASS

POLYCARBONATE

“

MATERIALS

&

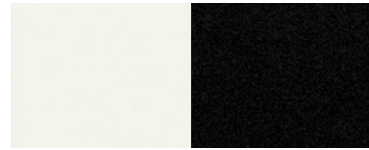
FINISHES

”

MELAMINE



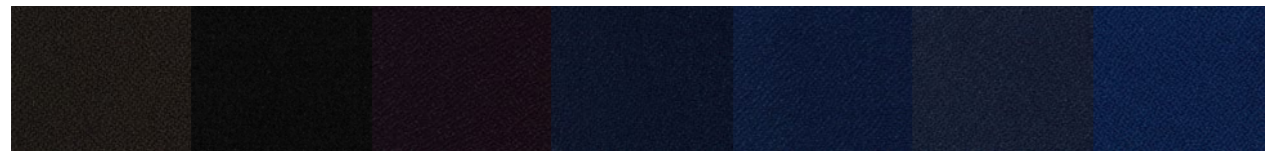
Avignon MV Charcoal ME Glacier MS Cherry capucino MU Noce nogaro MN OAK-69A MO Shimo ash MH



Ice white MW Storm black MK

FABRIC

G1 Newlight : Chairs / Panel

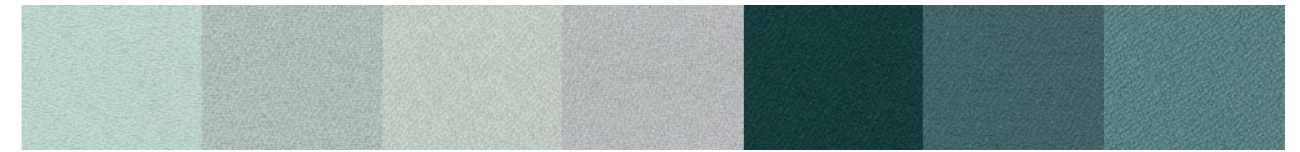


Chocolate 78-BR Black gold 89-BA Raisin 68-PU Royal blue 512-BL Deep blue 511-BL Ocean 58-BL Navy 510-BL

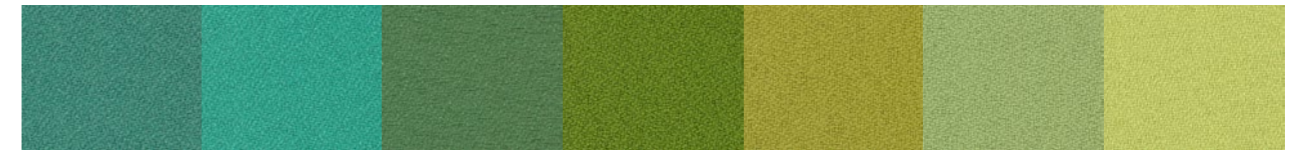


China blue 64-PU Expensive blue 55-BL Sapphire 54-BL Wedge wood 52-BL Fluorescent blue 53-BL Sky 51-BL Stream line 62-PU

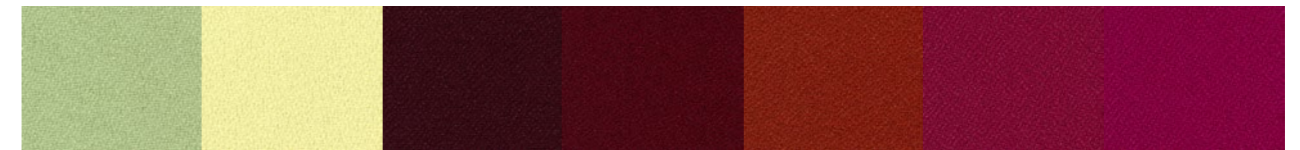
G1 Newlight : Chairs / Panel



Spring 57-BL Silver 91-GY Bluegrass 44-GR Cool grey 90-GY Avocado 412-GR Mineral 47-GR Green olive 46-GR



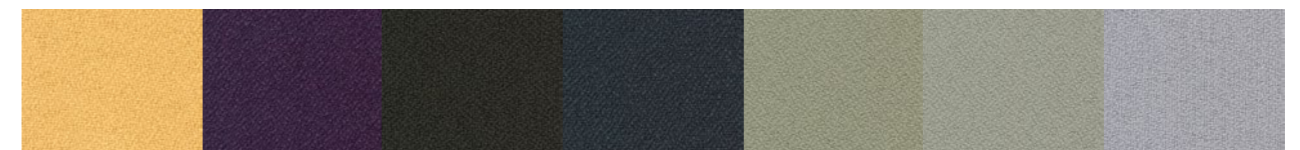
Atlantis 56-BL Emery 59-BL Forest 45-GR Jade 43-GR Sapgreen 49-GR Ultra 48-GR Cream gold 42-GR



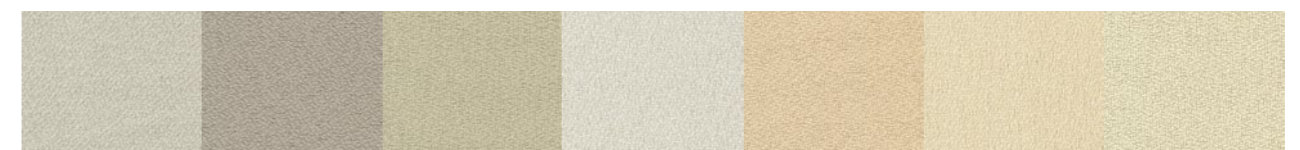
Fresh green 41-GR Lemon 31-YE Bordeaux 152-BR Ruby 18-RE Brick red 19-RE Plum 14-RE Persian red 16-RE



Raja 15-RE Fortune red 17-RE Mars red 20-OR Desert sun 22-OR Sunflower 38-YE Sun king 27-OR Brilliant yellow 35-YE



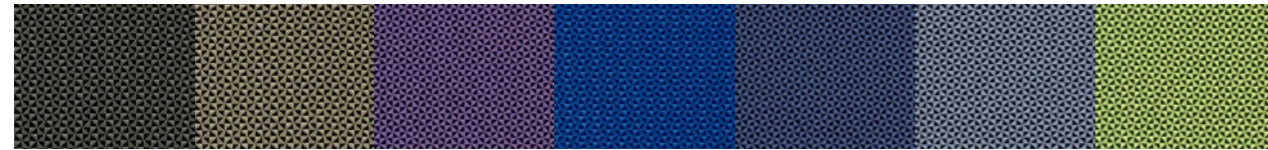
Damson 156-PU Night gold 97-GY Black pearl 98-GY Grey 93-GY Pewter 94-GY Bisque 73-BR Seasprey 50-BL



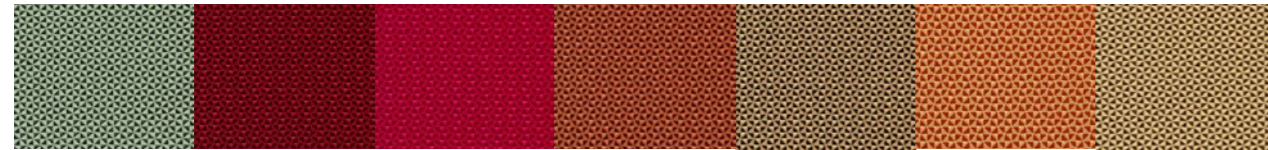
Seashell 71-BR Wheat 75-BR Cream 72-BR Pearl 01-WH Barley 02-WH Sunrise 34-YE Sand 74-BR



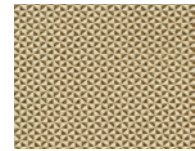
G1 **Platinum** : Panel



Granite P04    Khaki P03    Dark orchid P07    Skyway P17    Midnight blue P11    Laguna P16    Spring green P09



Olive P10    Deep Crimson P06    Hibiscus P15    Umber P14    Honeycomb P18    Golden orange P05    Wheat P13

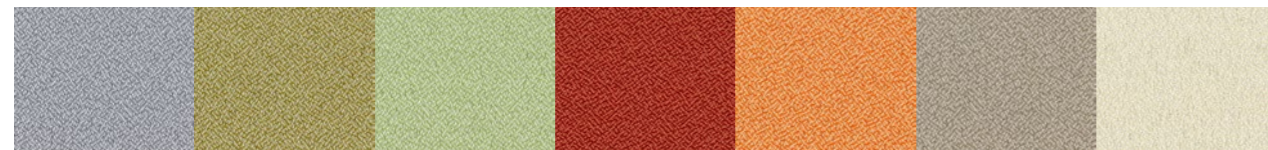


Chalk P12

G1 **Season** : Panel

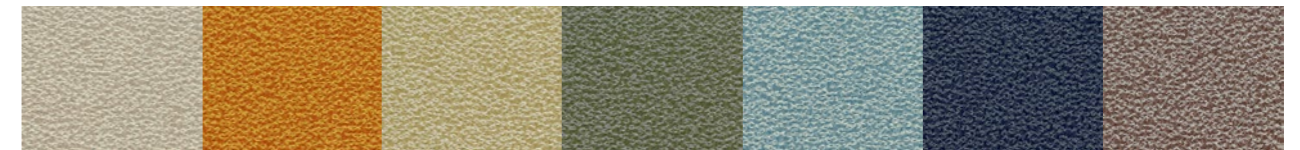


Amber SE05    Black SE15    Grey SE03    Sapphire SE13    Deep sea SE07    Aqua SE10    Sky SE12

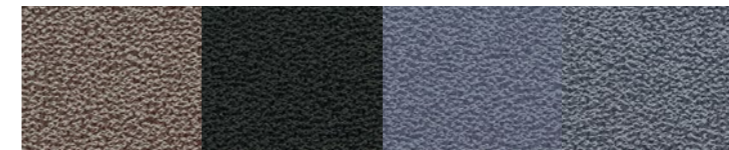


Silver SE02    Meadow SE09    Leaf SE08    Flame SE11    Peach SE06    Pearl SE01    Ivory SE04

G1 **Golden land** : Panel

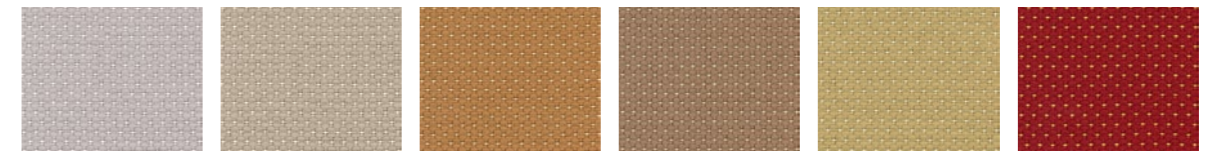


Sand 01-WH    Pagoda 22-OR    Golden carpet 32-YE    Lake 42-GR    Summer 51-BL    Sea 58-BL    Castle 72-BR

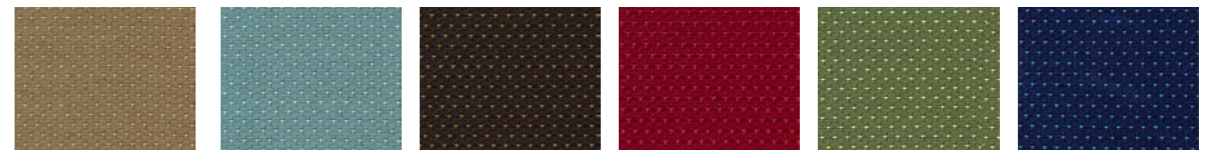


Tropical 78-BR    Valley 88-BA    Paradise 93-GY    Lagoon 96-GY

G2 **Roma** : Panel



Silver R-11    Sand R-12    Golden R-13    Oxford R-14    Lime R-15    Terra R-16

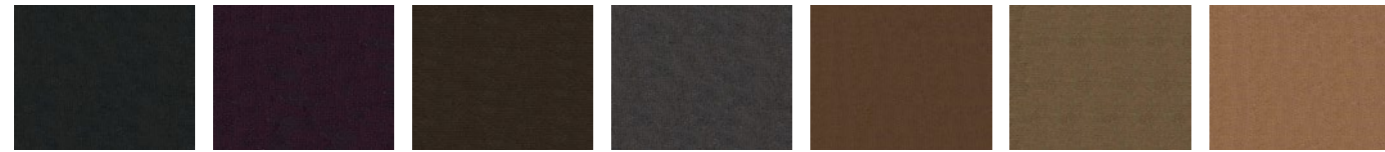


Ash R-17    Breeze R-18    Cocoa R-19    Maroon R-20    Leaf R-21    Night pound R-22



Midnight R-23    Fire work R-24    Lake R-25

G2 **Zuri** : Sofa / Loose Furniture / Panel



ZUR177 16   ZUR177 14   ZUR177 07   ZUR177 15   ZUR177 06   ZUR177 04   ZUR177 05



ZUR177 03   ZUR177 02   ZUR177 10   ZUR177 12   ZUR177 13   ZUR177 11   ZUR177 09

G2 **Calic** : Sofa / Loose Furniture / Panel



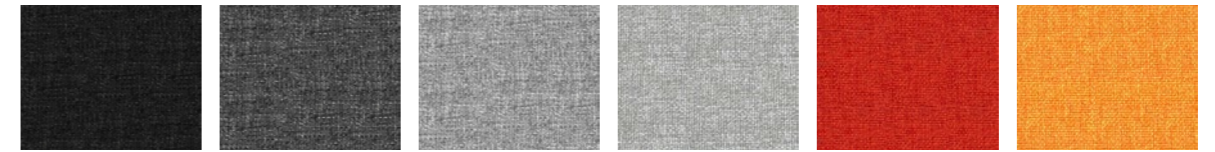
CAC842 08   CAC842 07   CAC842 06   CAC842 05   CAC842 02   CAC842 01   CAC842 03

G2 **Bistro** : Sofa



BIS479 05   BIS479 04   BIS479 03   BIS479 02

G2 **Flossy** : Sofa / Loose Furniture / Panel



FLO843 07   FLO843 08   FLO843 09   FLO843 02   FLO843 04   FLO843 03



FLO843 06   FLO843 10   FLO843 11   FLO843 12

G2 New **Alexa** : Sofa

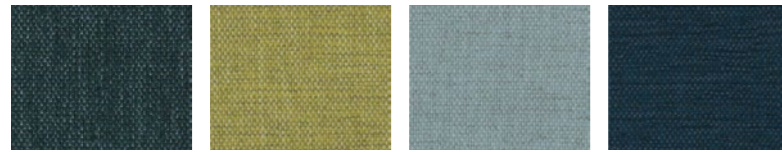


ALE665 01   ALE665 02   ALE665 03   ALE665 04



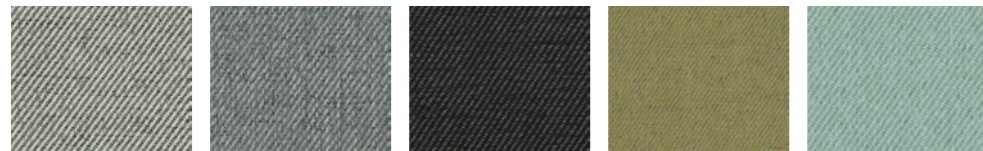
ALE665 08   ALE665 07   ALE665 06   ALE665 05

G2 New Allergen Proof1 : Sofa



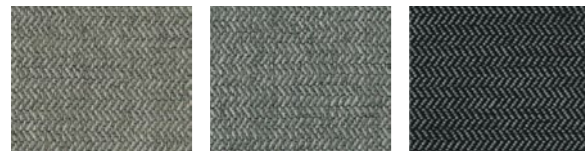
ALG861 04 ALG861 05 ALG861 06 ALG861 07

G2 New Allergen Proof2 : Sofa



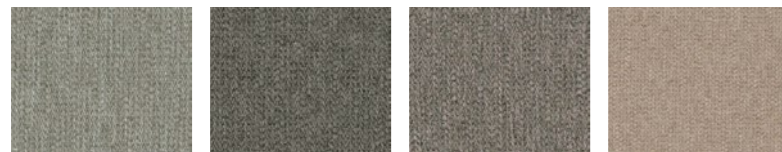
ALG862 02 ALG862 03 ALG862 04 ALG862 05 ALG862 06

G2 New Allergen Proof3 : Sofa



ALG863 01 ALG863 02 ALG863 03

G2 New Clinique Plus : Sofa



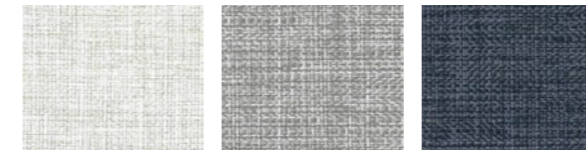
CNP352 01 CNP352 02 CNP352 03 CNP352 03

G2 New Cottolique : Sofa



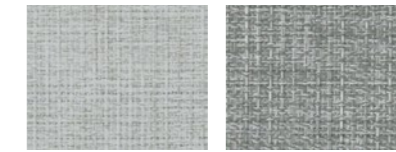
CLQ732 02 CLQ732 04 CLQ732 05

G2 New Dimo1 : Sofa Only



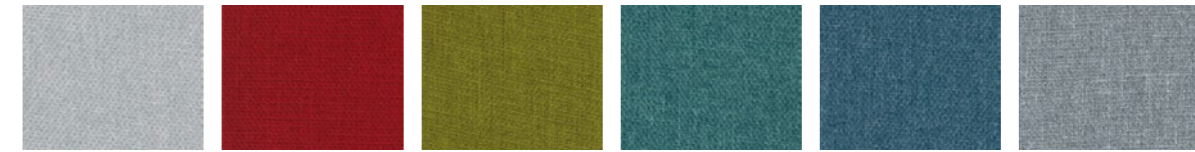
DMO746 01 DMO746 02 DMO746 03

G2 New Dimo2 : Sofa



DMO747 01 DMO747 02

G2 New Fermo : Sofa Only



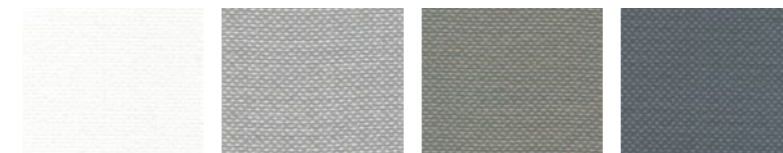
FER830 02 FER830 05 FER830 06 FER830 07 FER830 08 FER830 11

G2 New Happ2 : Sofa



HPP947 01 HPP947 02 HPP947 03 HPP947 04 HPP947 05 HPP947 06

G2 New Keen : Sofa



KEE269 01 KEE269 02 KEE269 03 KEE269 04

G2 New **Lauren** : Sofa



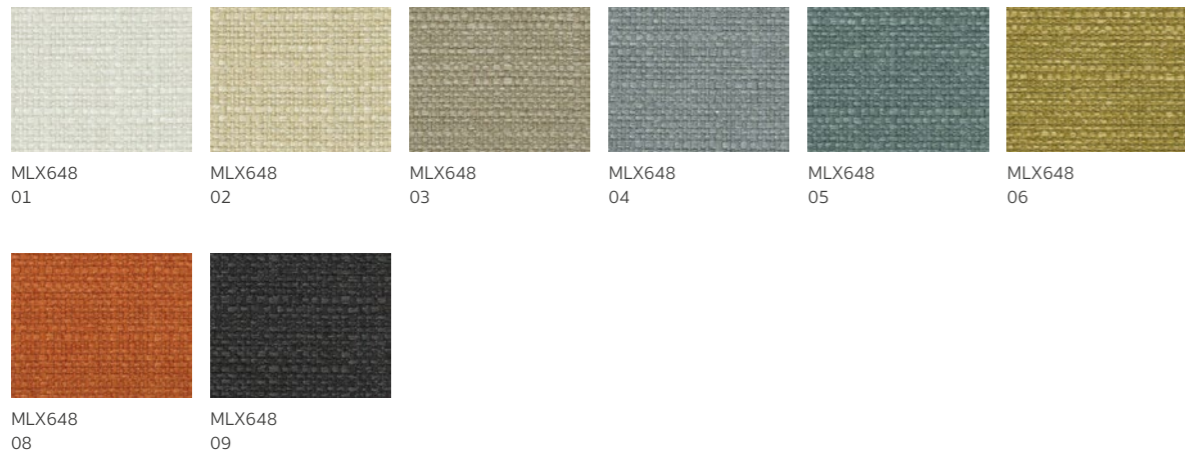
G2 New **Luster** : Sofa



G2 New **Marni** : Sofa



G2 New **Maxwell** : Sofa



G2 New **Modish1** : Sofa



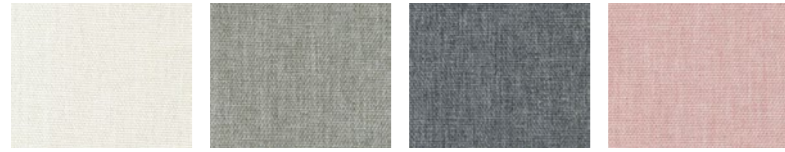
G2 New **Sacco** : Sofa



G2 New **Splendid** : Sofa

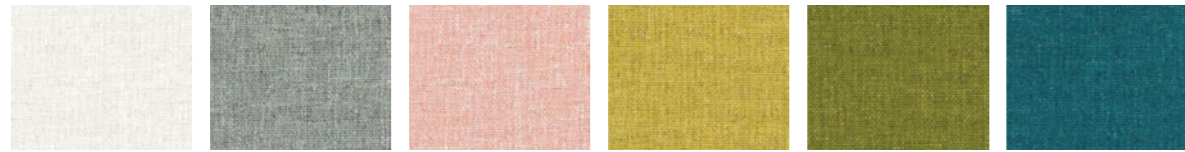


G2 New **Umi** : Sofa



UMI157 01    UMI157 02    UMI157 03    UMI157 04

G2 New **Vivi** : Sofa



VIV146 01    VIV146 02    VIV146 03    VIV146 04    VIV146 05    VIV146 06



VIV146 07

G3 **Zebra** : Sofa Myraid Only



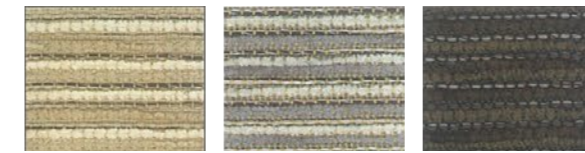
Ruby 05    Sapphire 08    Citrin 09    Emerald 10

**Sak** : Classic Chair Only



CN9701    CN9702    CN9703

**Bamboo** : Classic Chair Only

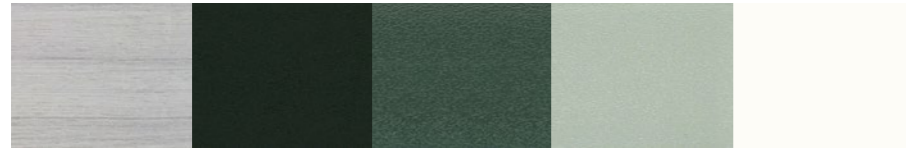


CN8701    CN8702    CN8703

**EDGE-BANDING**



Noce nagaro    Cherry capucino    Oak 69A    Shimo ash



Avinion    Storm black    Charcoal    Gracier    Ice white

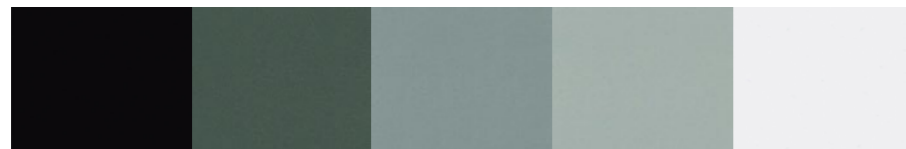
**HANDLE**



C-Type    I-Type    T-Type    U-Type

**METAL**

Powder Coated Steel



Arabica black FB    Charcoal FE    Mouse grey FD    Pearl silver FS    Alpine white FW



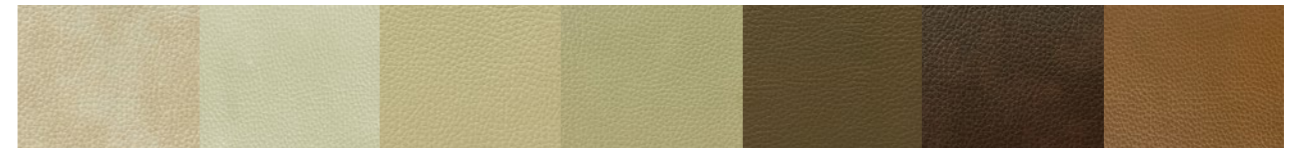
Fire orange FO    Moss green FG    Ocean blue FU    Rose Pink FP

**LEATHER** : Executive Chair / Sofa



Mocha    Black    Dark grey    Whisky    Ivory    White

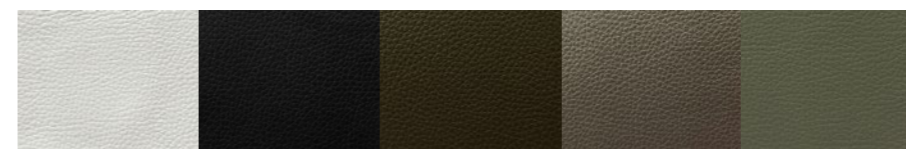
**VINYL** : Executive Chair / Sofa



Sand JU 01    Ivory JU 16    Tan JU 18    Khaki JU 19    Taupe JU 20    Brunette JU 03    Walnut JU 24



Cinnamon JU 04    Burgundy Brown JU 02    Merlot JU 11    Tangerine JU 21    Royal Blue JU 22    Navy Blue JU 23    Wood JU 05



White JU 15    Black JU 13    Dark Chocolate JU 26    Cafe JU 12    Smoke JU 25

**ACRYLIC**



Clear    Frosted white

**GLASS**



Black GB    White GW

**POLYCARBONATE**



Tea    Marine    Clear

# ECOLOGY & THE ENVIRONMENT

## We have a green soul

we understand the difference of steps toward the sustainable organization, and realize that we can only achieve this by working together with everyone in our company. in order to achieve our goals we have implemented an environmental management system based on the iso standard, which allows for a comprehensive approach to ecology.



ANSI/BIFMA

The Business and Institution  
Furniture Manufacturer's Association.



SCS INDOOR AIR QUALITY

Certify to the most transparent Indoor Air Quality (IAQ) standard for furniture and building materials .



**ISO 45001: 2018**  
Specifies requirement for an occupational health and safety management system



**ISO 9001: 2015**  
Specific requirements for a quality management system



**ISO 14001: 2015**  
Gives the requirements for environmental management systems



**ISO 50001: 2011**  
Energy management system

# Unlock your potential, access your best work



Our purpose is more important than ever as we work together to create a better world of work.

At Rockworth, creating a satisfyingly efficient workplace in which people can cultivate their potential is at the heart of what we do. Because we know that an inspiring workspace is important both for employee well-being and organization performance. Our focus is sustainable products that help people to work better and learn better.

Rockworth is about people, driven by purpose. We believe that an inspiring workspace increase the joy of work, comfort, wellbeing and productivity.


We design and create furniture for the modern workspace, with the needs of employee in mind. We offer a variety of modern, durable and functional solutions. Our products are designed to serve the needs of people at work that supports a better ways of working, collaboration and socializing. Every working day.





## Rockworth

Rockworth Public Company Limited  
294-300 Asoke-Dindaeng Rd, Bangkapi,  
Huai Khwang, Bangkok 10320

 +66 (2) 123-8888

 [sales@rockworth.com](mailto:sales@rockworth.com)

 [rockworth.official](https://www.facebook.com/rockworth.official)

 [rockworth.official](https://www.instagram.com/rockworth.official)

 [rockworth](https://www.youtube.com/rockworth)

 [rockworth.official](https://line.me/rockworth.official)

We design and create furniture for the modern workspace, with the needs of employee in mind. We offer a variety of modern, durable and functional solutions. Our products are designed to serve the needs of people at work that supports a better ways of working, collaboration and socializing. Every working day.