

# ARCO



Rockworth



COMPACT  
DESIGN,  
COMPLETE  
COM*f*ORT

**ARCO** is designed for the modern workspace, offering two seat options: soft fabric for comfort and flexible vinyl leather for durability. The vinyl leather adds a sophisticated touch, bringing luxury and timeless elegance to your office space, while the fabric upholstery is user-friendly, easy to maintain, and perfectly complements contemporary interiors. With its compact and agile form, ARCO emphasizes ergonomics with a curved seat cushion that supports your natural posture, making it the ideal chair for all-day comfort and productivity.



**Ergonomic Curve  
for Ultimate Comfort**

The Arco offers exceptional comfort with its contoured, waterfall-edge seat. Designed to follow the natural shape of your body, the curved seat reduces pressure on your thighs, enhances circulation, and provides all-day ergonomic support



## Shaped for Stability, Designed for You

ARCO's backrest is designed with a stable and structured form, delivering a sense of strength and balance in every detail. The adjustable design allows you to effortlessly lift or lower it to find your perfect position.



Tailored to your body's proportions, it provides ideal balance of support and comfort for all-day use.

**GREY frame**

Choose the Grey Frame, featuring aluminum casters paired with white legs and an armrest base. It creates a refined contrast that adds a clean and elegant touch to any modern workspace.

**BLACK frame**

Choose the Black Frame, featuring a durable nylon base paired with bold black legs and an armrest base. It offers a seamless, modern design that perfectly complements any contemporary workspace.



The shell, armrest base, legs, and wheels are only available in these matching combinations.

# FEATURES & FUNCTIONS

## 2D Headrest •

5 position height adjustment with effective stroke of 30mm

## Backrest •

Enabling you to lift it up or down to the right position, with a 6-position lock and a range of 50mm

## Recline Angle Limiter •

The weight-sensitive mechanism adjusts to your body, with a 21° back tilt and 3 locking positions. The seat moves naturally with the backrest for continuous comfort.

## 3D Armrest

The 3D armrests move in three directions, allowing you to adjust their height, depth, and width.

- 9-position height adjustment (effective stroke:75mm)
- 7-position PU Pad forward and backward adjustment (effective stroke:40mm)
- 4-position PU Pad left and right adjustment (effective stroke:30mm)

## • Seat Height & Seat Slide

Adjust seat height with the Class-4 gas lift and 6-position seat depth slides. Simply press the handle to move the seat forwards or backwards, finding the perfect position for you.

## • Caster

Designed for smooth, effortless movement, the swivel casters allow you to glide freely in any direction, offering ultimate flexibility and convenience in any workspace.





STATEMENT OF LINE

BLACK FRAME

- Nylon base only
- legs, and armrest base will be in black only.



Midback Chair

HighBack Chair

GREY FRAME

- Aluminum base only
- legs, and armrest base will be in white only.

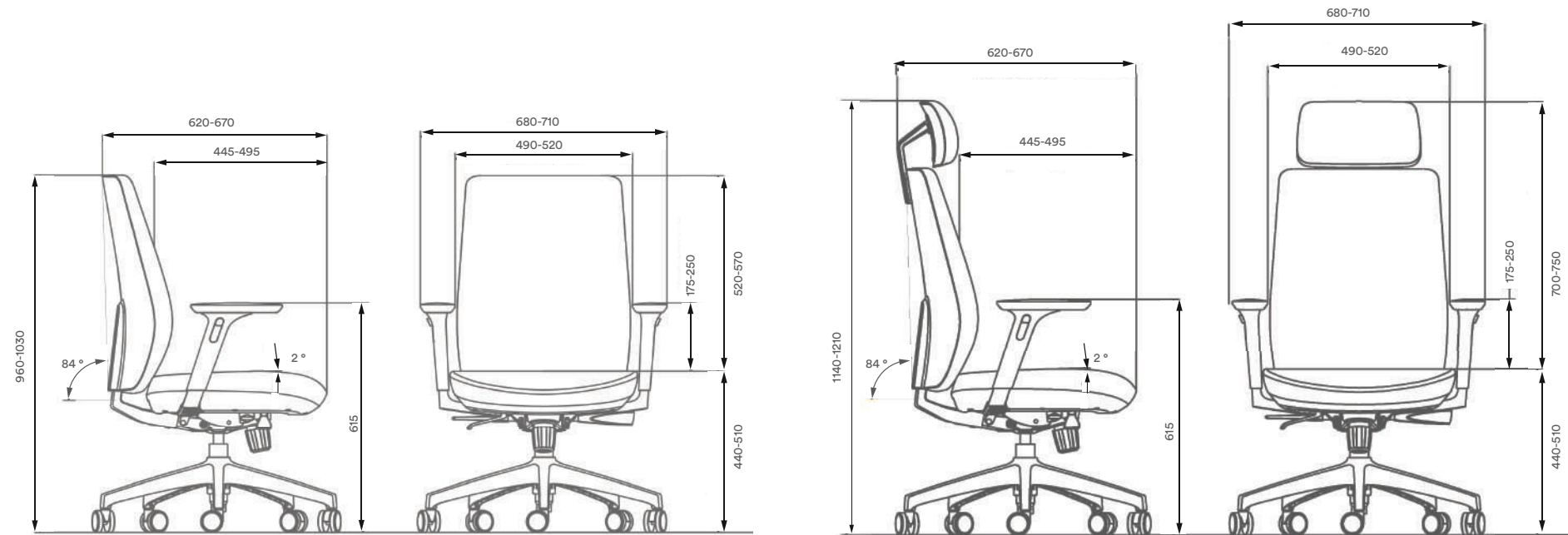


Midback Chair

HighBack Chair

MEASUREMENT

Dimension (mm)					
No.	Item	H	D	W	SH
1	MID BACK	960-1030	670	710	440-510
2	HIGH BACK	1140-1230	670	710	440-510



PRODUCT SPECIFICATION

Headrest

Reinforced nylon (PA66) structure with 40% glass fiber, upholstered with PU molded foam. Height adjustable in 5 positions with a 30 mm range for personalized support.

Backrest

Durable nylon (PA66) frame reinforced with 30% glass fiber and plywood core, upholstered with PU molded foam. Height adjustable in 6 positions with a total range of 50 mm, ensuring customized comfort.

Seat

Polypropylene (PP) structure with plywood reinforcement and PU molded foam cushion for superior comfort. Seat depth adjustable in 6 positions, total range 50 mm, adapting perfectly to different body proportions.

Armrest

Aluminum base with white paint finish and nylon stem. PU arm pad with smooth texture for comfort.

3D adjustable

- Left–Right: 4 positions (range 60 mm)
- Up–Down: 9 positions (range 75 mm)
- Forward–Backward: 7 positions (range 40 mm)

Posture Control

Self-weight responsive mechanism with synchronized backrest tilting and 3 locking positions, promoting natural posture and dynamic movement.

Gas Lift

Class-4 gas lift (BIFMA standard) for smooth height adjustment and durability.

Base

Aluminum base with white paint

Nylon Base

Castors

Inner Nylon plastic, Outer PU plastic

WARRANTY

5 YEARS

PRODUCT SPECIFICATION



## SUSTAINABILITY

Rockworth is committed to operating with integrity and responsibility in everything we do. Our value chain reflects our deep dedication to people and the planet, guiding our actions every day. Sustainability is not just a goal—it is embedded in our mindset, shaping the way we design, produce, and deliver solutions that create a positive impact on businesses, communities, and the environment.

### Safe materials

The materials and raw components used in our production processes meet stringent quality standards. They are certified to ensure they pose no risk to human health or the environment.

### Waste reduction

We actively minimize raw material waste throughout the design and production stages. Examples include precision computer-cut fabrics and leathers, as well as sourcing materials in clearly defined dimensions to optimize resource usage.

### Energy Efficiency

Reducing electricity consumption is a key priority for our company. We implement technical and organizational improvements and provide continuous training for employees to achieve this goal.

### Waste segregation

For many years, we have successfully operated a structured waste segregation program, transferring sorted waste to authorized recycling partners. We actively encourage and educate our employees and the local community on effective waste segregation practices.

### Environmental protection

We proactively identify and monitor potential environmental risks across all our operations. Our teams remain vigilant, prepared to respond effectively and responsibly whenever environmental threats arise.

## CERTIFICATE

### ISO 14002: 2015

Gives the requirements for environmental management systems, confirms its global relevance for organizations wishing to operate in an environmentally sustainable manner.

### ISO 45001: 2018

Employees’ health and safety in the workplace and improving the well-being of within the workplace environment.

### ISO 9001: 2015

Quality Management Systems is a globally recognized standard for quality management. It helps organizations of all sizes and sectors to improve their performance.

### ISO 50001: 2018

Energy management system: Makes it easier for organizations to integrate energy management into their overall efforts to improve quality and environmental management.

### Scs Indoor Air Quality

Certify to the most transparent Indoor Air Quality (IAQ) standard for furniture and building materials with Indoor Advantage and Indoor Advantage Gold.

### Leadership In Energy And Environment

Based on accepted energy and environmental principles and strikes a balance between known establishedpractices and emerging concepts.

### Indian Building Council Member

USGBC is best known for its development of the Leadership in Energy and Environmental Design (LEED) green building rating systems.

## MATERIALS & FINISHES

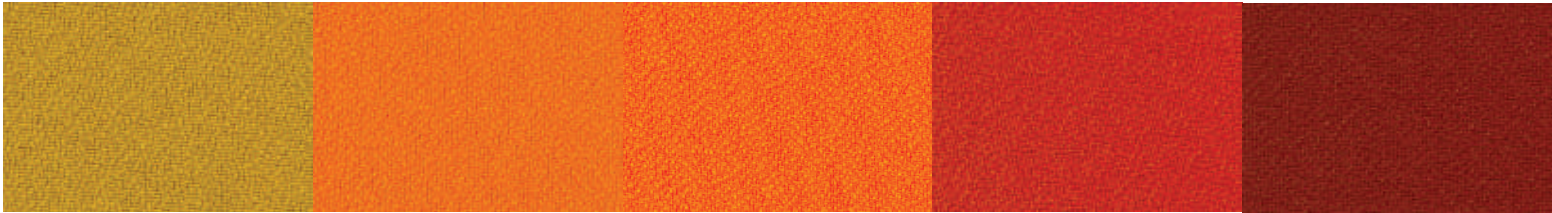
### FABRIC G1 New Light



<b>Pearl</b> 01-WH	<b>Barley</b> 02-WH	<b>Seashell</b> 71-BR	<b>Sand</b> 74-BR	<b>Cream</b> 72-BR
-----------------------	------------------------	--------------------------	----------------------	-----------------------



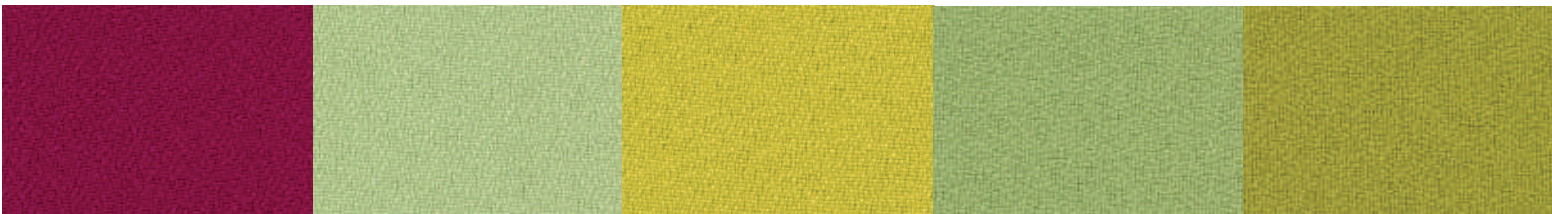
<b>Wheat</b> 75-BR	<b>Bisque</b> 73-BR	<b>Lemon</b> 31-YE	<b>Brilliant yellow</b> 35-YE	<b>Sunrise</b> 34-YE
-----------------------	------------------------	-----------------------	----------------------------------	-------------------------



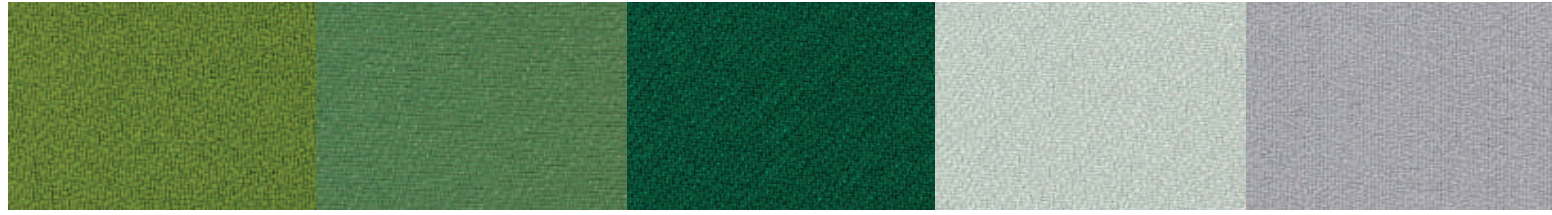
<b>Sunflower</b> 38-YE	<b>Desert sun</b> 22-OR	<b>Sun king</b> 27-OR	<b>Mars red</b> 20-OR	<b>Brick red</b> 19-RE
---------------------------	----------------------------	--------------------------	--------------------------	---------------------------



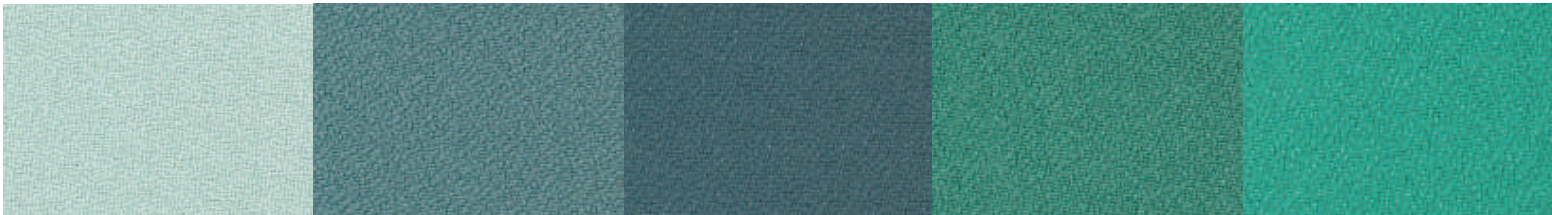
<b>Plum</b> 14-RE	<b>Raja</b> 15-RE	<b>Fortune red</b> 17-RE	<b>Ruby</b> 18-RE	<b>Bordeaux</b> 152-BR
----------------------	----------------------	-----------------------------	----------------------	---------------------------



<b>Persian red</b> 16-RE	<b>Fresh green</b> 41-GR	<b>Cream gold</b> 42-GR	<b>Ultra</b> 48-GR	<b>Sapgreen</b> 49-GR
-----------------------------	-----------------------------	----------------------------	-----------------------	--------------------------



<b>Green olive</b> 46-GR	<b>Mineral</b> 47-GR	<b>Avocado</b> 412-GR	<b>Bluegrass</b> 44-GR	<b>Seasprey</b> 50-BL
-----------------------------	-------------------------	--------------------------	---------------------------	--------------------------



<b>Spring</b> 57-BL	<b>Emery</b> 59-BL	<b>Atlantis</b> 56-BL	<b>Forest</b> 45-GR	<b>Jade</b> 43-GR
------------------------	-----------------------	--------------------------	------------------------	----------------------

MATERIALS & FINISHES



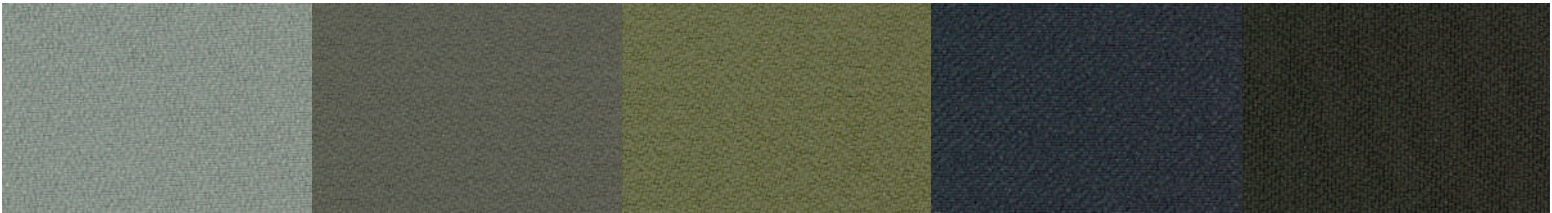
**Sky**  
51-BL      **Wedge wood**  
52-BL      **Stream line**  
62-PU      **Fluorescent blue**  
53-BL      **Sapphire**  
54-BL



**Expensive blue**  
55-BL      **China blue**  
64-PU      **Navy**  
510-BL      **Deep blue**  
511-BL      **Royal blue**  
512-BL



**Ocean**  
58-BL      **Damson**  
156-PU      **Raisin**  
68-PU      **Chocolate**  
78-BR      **Cool grey**  
90-GY



**Silver**  
91-GY      **Grey**  
93-GY      **Pewter**  
94-GY      **Black pearl**  
98-GY      **Night gold**  
97-GY



**Black gold**  
89-BA

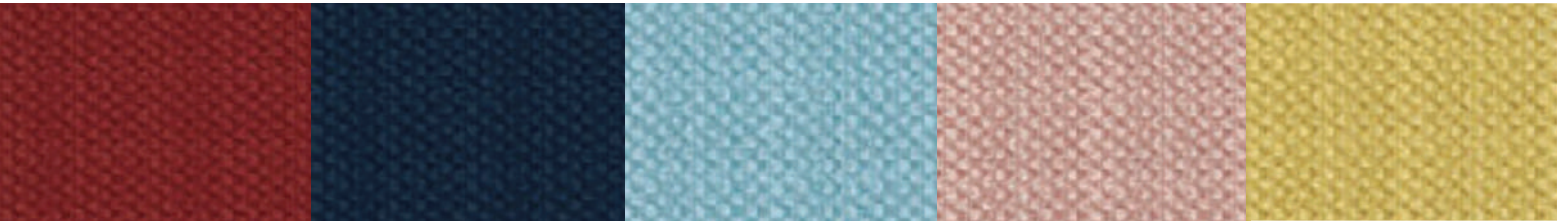
FABRIC **G2**  
Aden



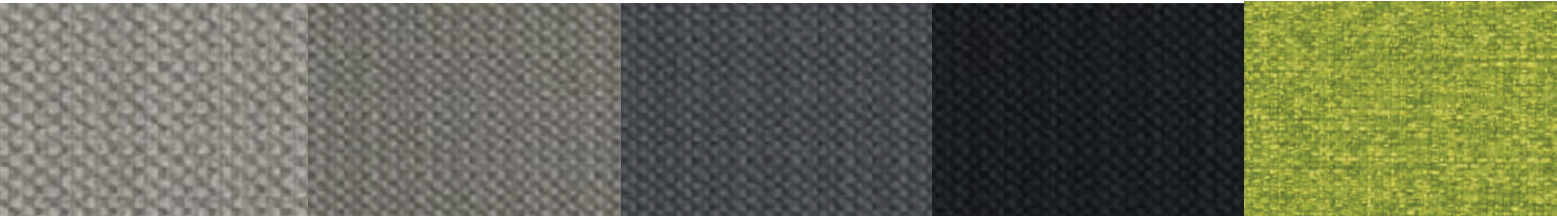
**01**  
ADE397      **02**  
ADE397      **03**  
ADE397      **04**  
ADE397

MATERIALS & FINISHES

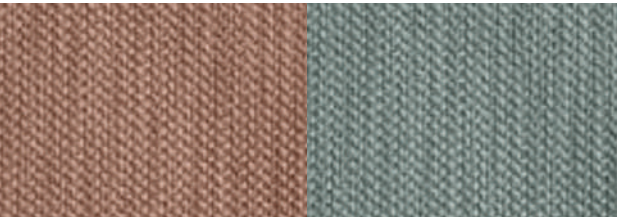
FABRIC **G1**  
Molly



Red      Dark Blue      Sky Blue      Pink      Yellow

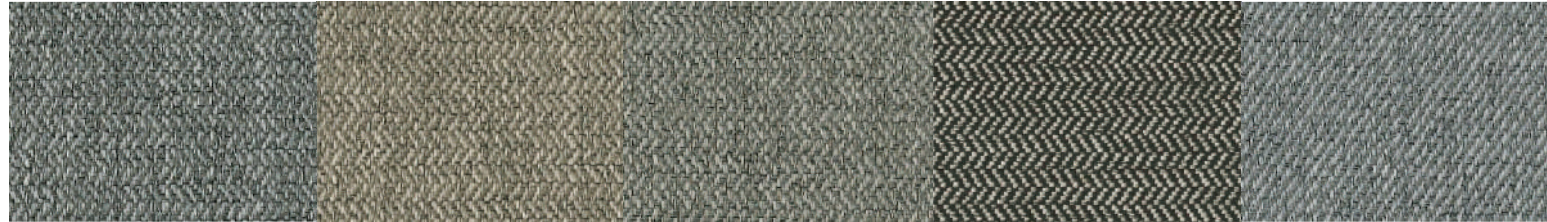


Grey      Taupe      Dark Grey      Black      Rise Husk



Tan Brown      Sage Green

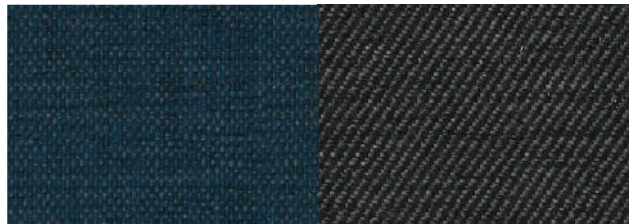
FABRIC **G2**  
Allergen



**02**  
ALG863      **02**  
ALG862      **01**  
ALG863      **03**  
ALG863      **03**  
ALG862



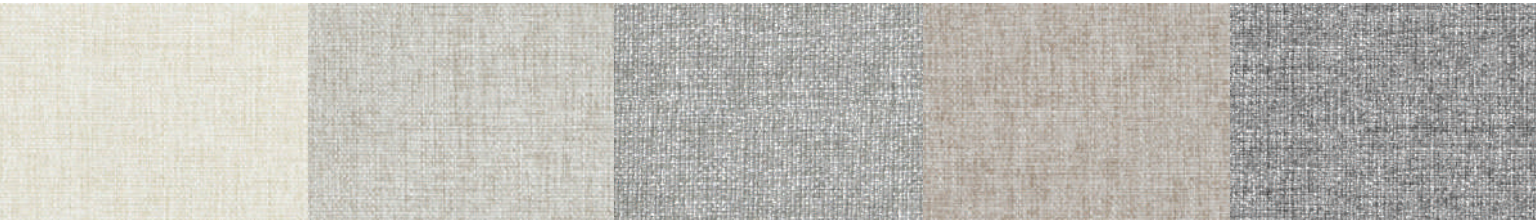
**05**  
ALG861      **05**  
ALG862      **06**  
ALG862      **06**  
ALG861      **04**  
ALG861



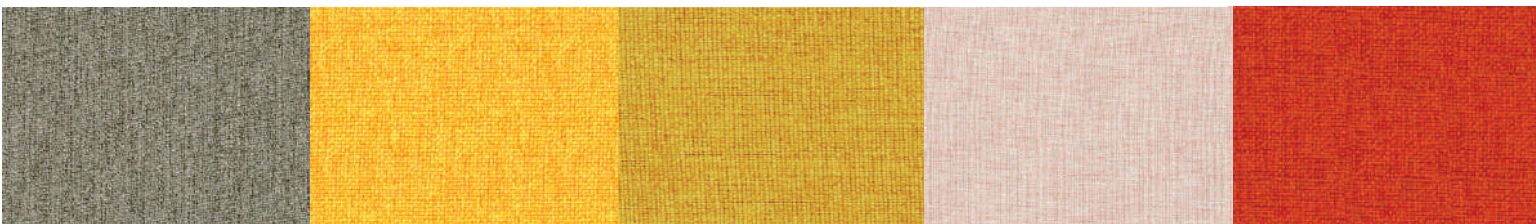
**07**  
ALG861      **04**  
ALG862

MATERIALS & FINISHES

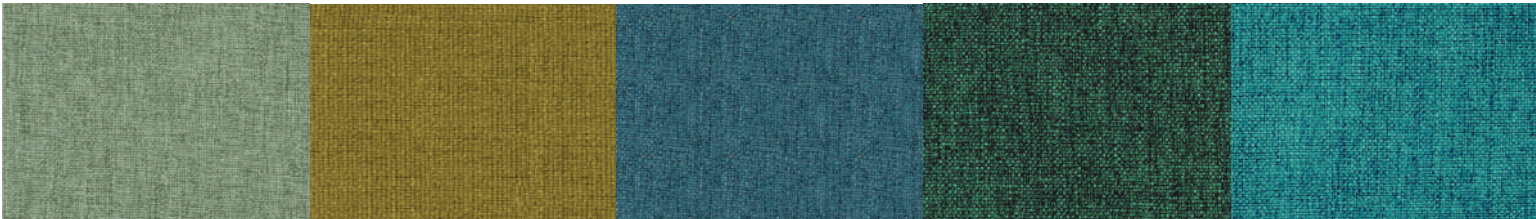
FABRIC **G2**  
Flossy



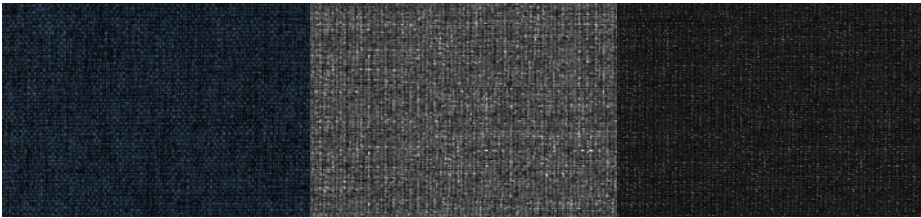
**13** FLO843      **14** FLO843      **02** FLO843      **15** FLO843      **09** FLO843



**10** FLO843      **03** FLO843      **19** FLO843      **11** FLO843      **04** FLO843

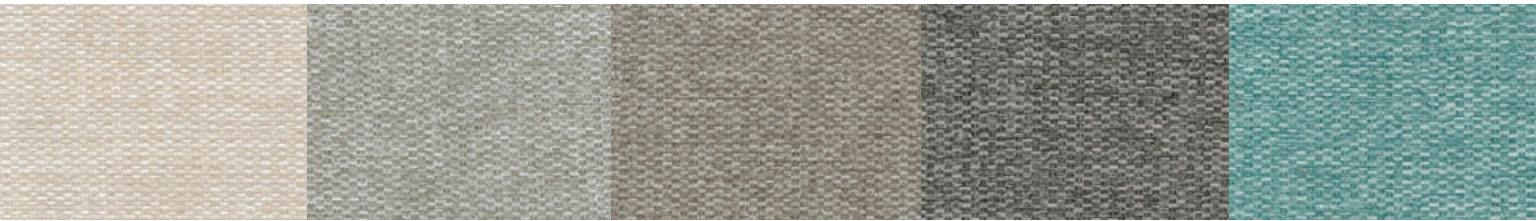


**12** FLO843      **05** FLO843      **06** FLO843      **18** FLO843      **17** FLO843

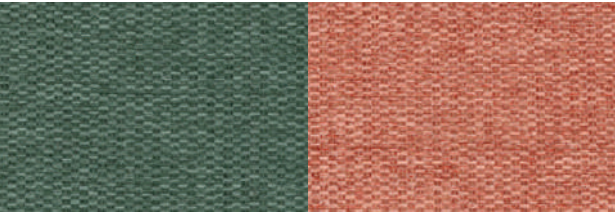


**16** FLO843      **08** FLO843      **07** FLO843

FABRIC **G2**  
Eden



**01** EDN396      **02** EDN396      **03** EDN396      **04** EDN396      **06** EDN396



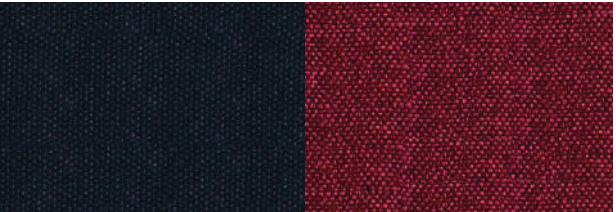
**05** EDN396      **07** EDN396

MATERIALS & FINISHES

FABRIC **G2**  
Calic

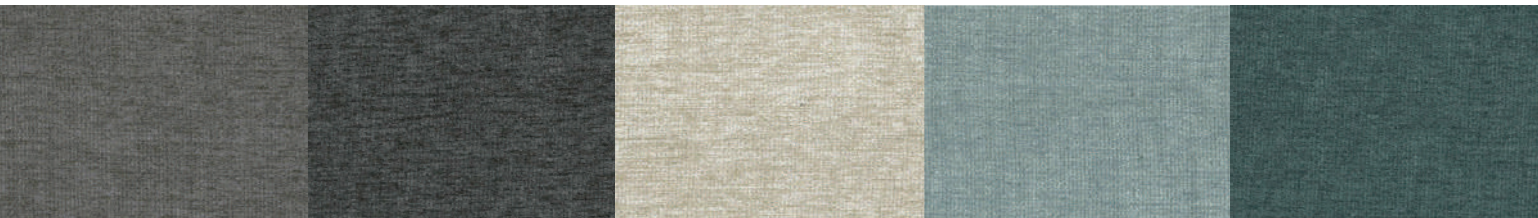


**01** CAC842      **02** CAC842      **07** CAC842      **08** CAC842      **05** CAC842

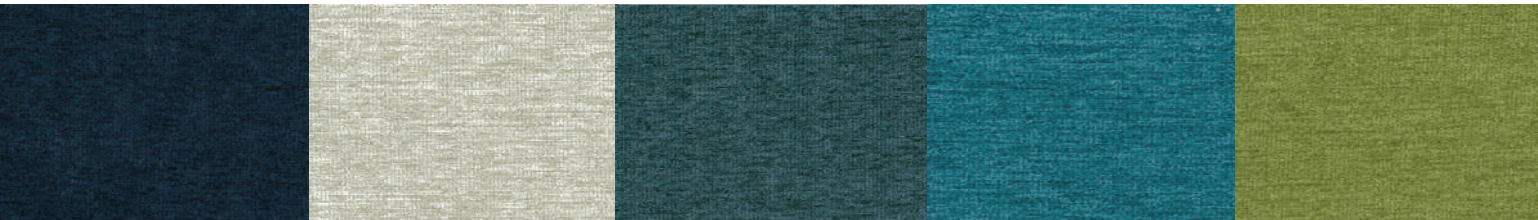


**06** CAC842      **03** CAC842

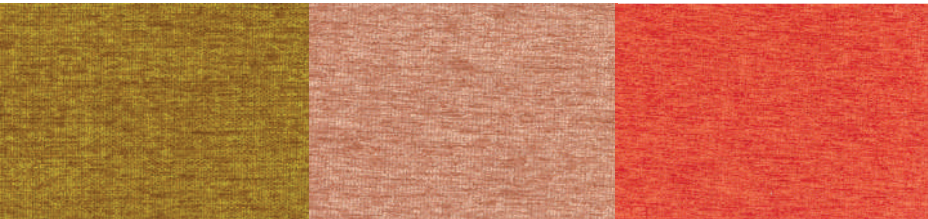
FABRIC **G2**  
Happ



**01** HPP947      **02** HPP947      **03** HPP947      **04** HPP947      **05** HPP947



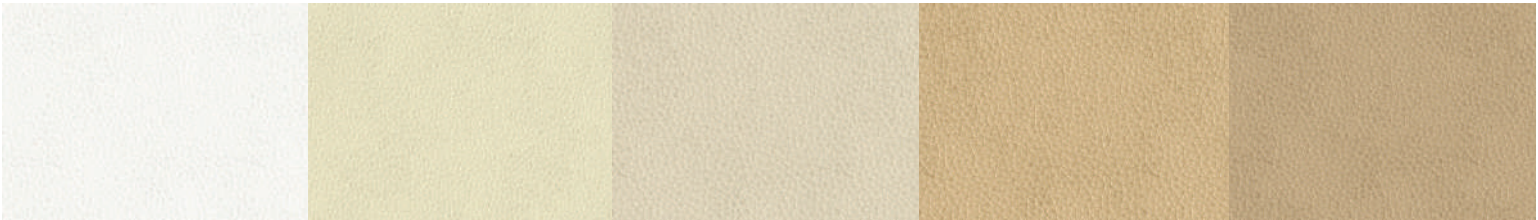
**06** HPP947      **07** HPP947      **08** HPP947      **09** HPP947      **10** HPP947



**11** HPP947      **12** HPP947      **13** HPP947

MATERIALS & FINISHES

VINYL



**JU 15**  
White

**JU 16**  
Ivory

**JU 01**  
Sand

**JU 18**  
Tan

**JU 19**  
Khaki



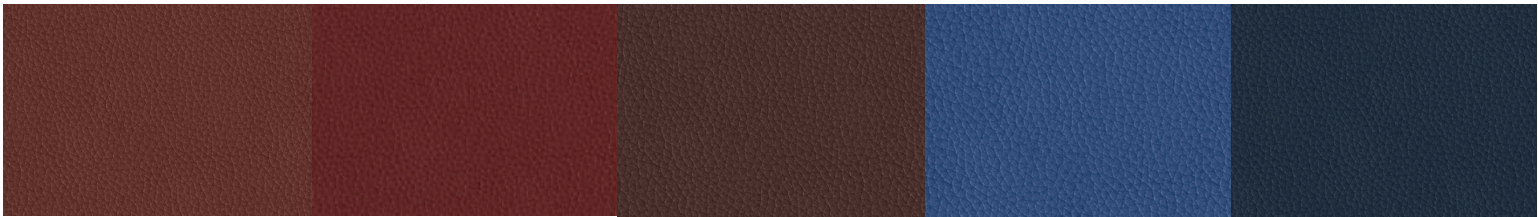
**JU 20**  
Taupe

**JU 25**  
Smoke

**JU 21**  
Tangerine

**JU 24**  
Walnut

**JU 04**  
Cinnamon



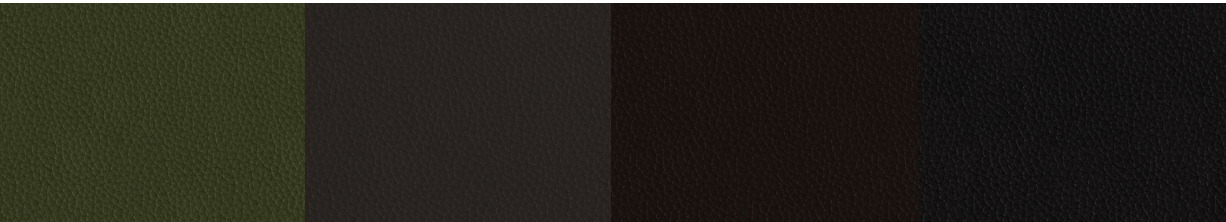
**JU 02**  
Burgundy Brown

**JU 11**  
Merlot

**JU 03**  
Brunette

**JU 22**  
Royal Blue

**JU 23**  
Navy Blue



**JU 05**  
Wood

**JU 12**  
Cafe

**JU 26**  
Dark Chocolate

**JU 13**  
Black

FRAME



**Black**

**Grey**

For more information about the product  
Please scan the QR code.



[www.rockworth.com](http://www.rockworth.com)

The producer reserves the right to conduct construction changes and improvements of the products.  
Colors presented in the catalogue may vary from the original colors of furniture