

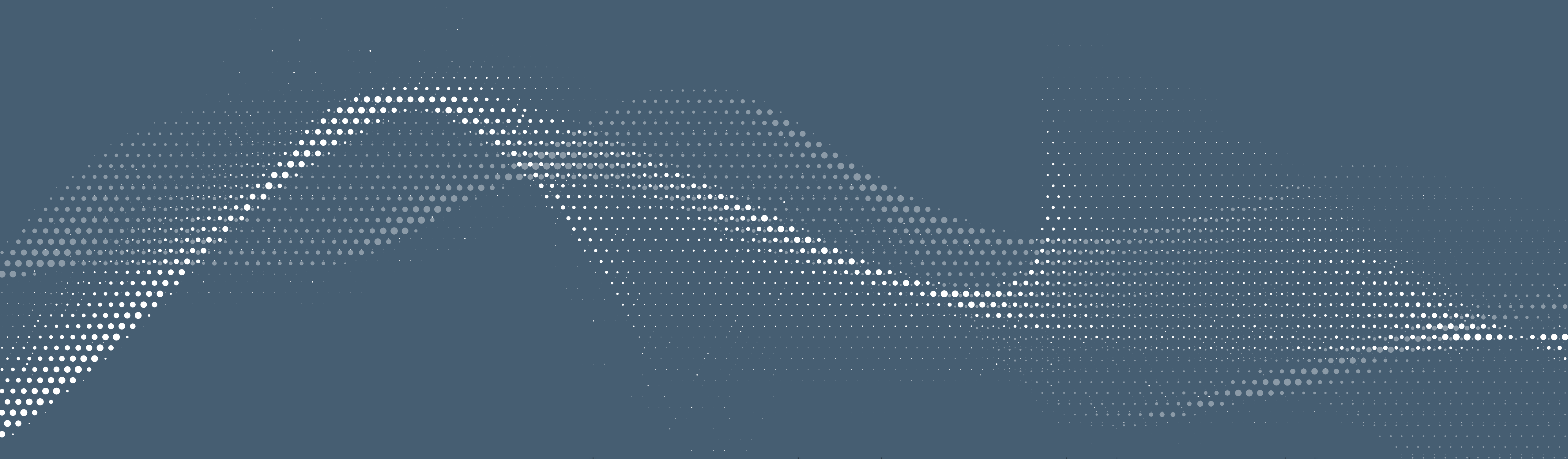
ACOUSTIC PANELS



Rockworth

SUSTAINABLE ACOUSTIC SOLUTION

Feel the calm through sustainable design. A minimalist acoustic solution for open-plan workplaces, available as both wall panels and ceiling-hanging elements to reduce reverberation and distractions, supporting focus and productivity. Made from 100% recycled materials, it brings together quiet comfort, sustainability, and safety in a clean, refined, premium aesthetic.





SOUND-ABSORBING
ACOUSTIC PANELS
DESIGNED TO DEFINE
SPACES WITH STYLE



Eco-Material

Made from 100% recycled PET, helping reduce plastic waste and supporting reusability.



High NRC rating

High sound absorption (NRC up to 0.85) to reduce echo and reverberation.



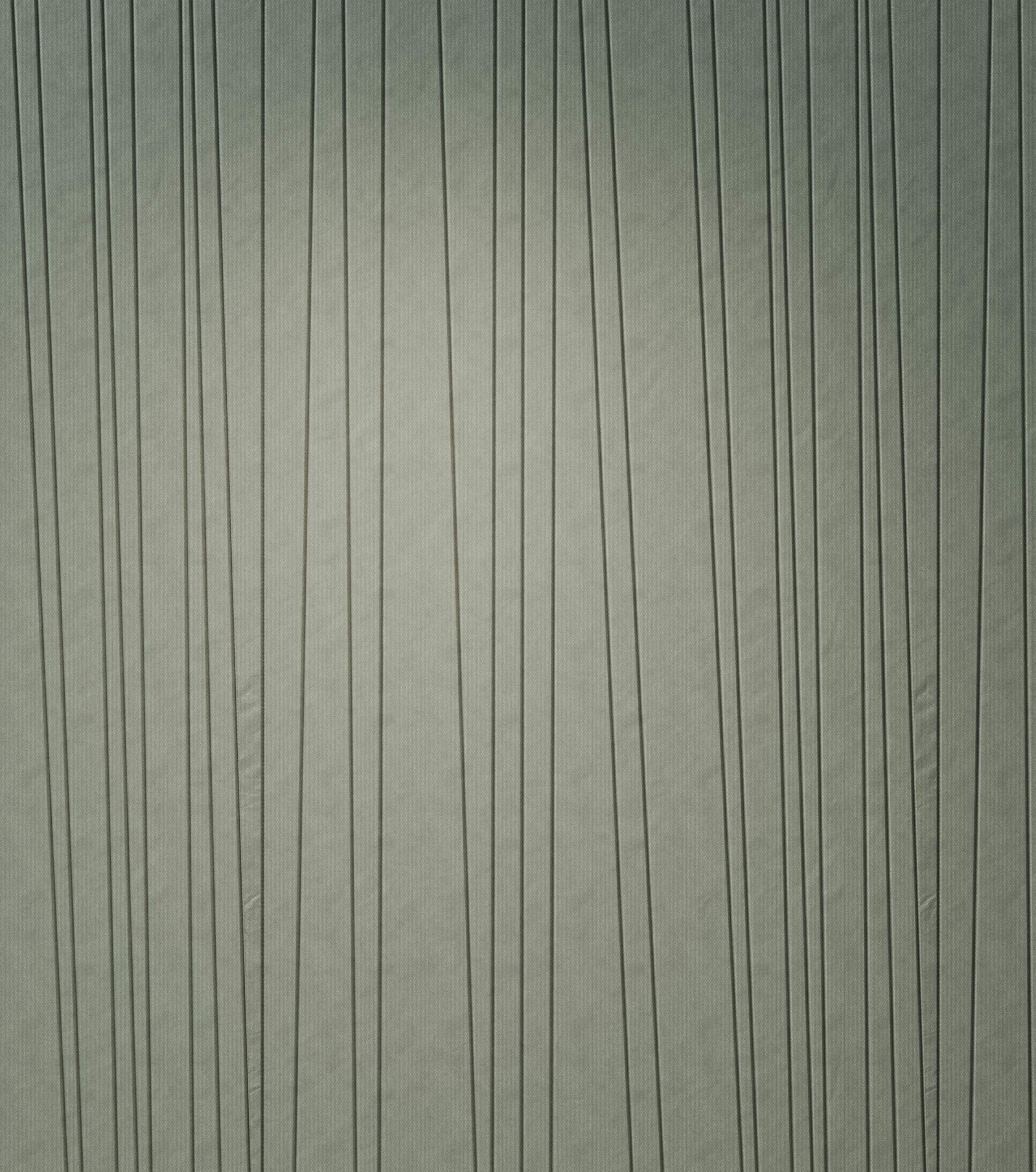
Non-Toxic

Low-VOC and free from harmful substances, supporting healthier indoor air and user wellbeing.



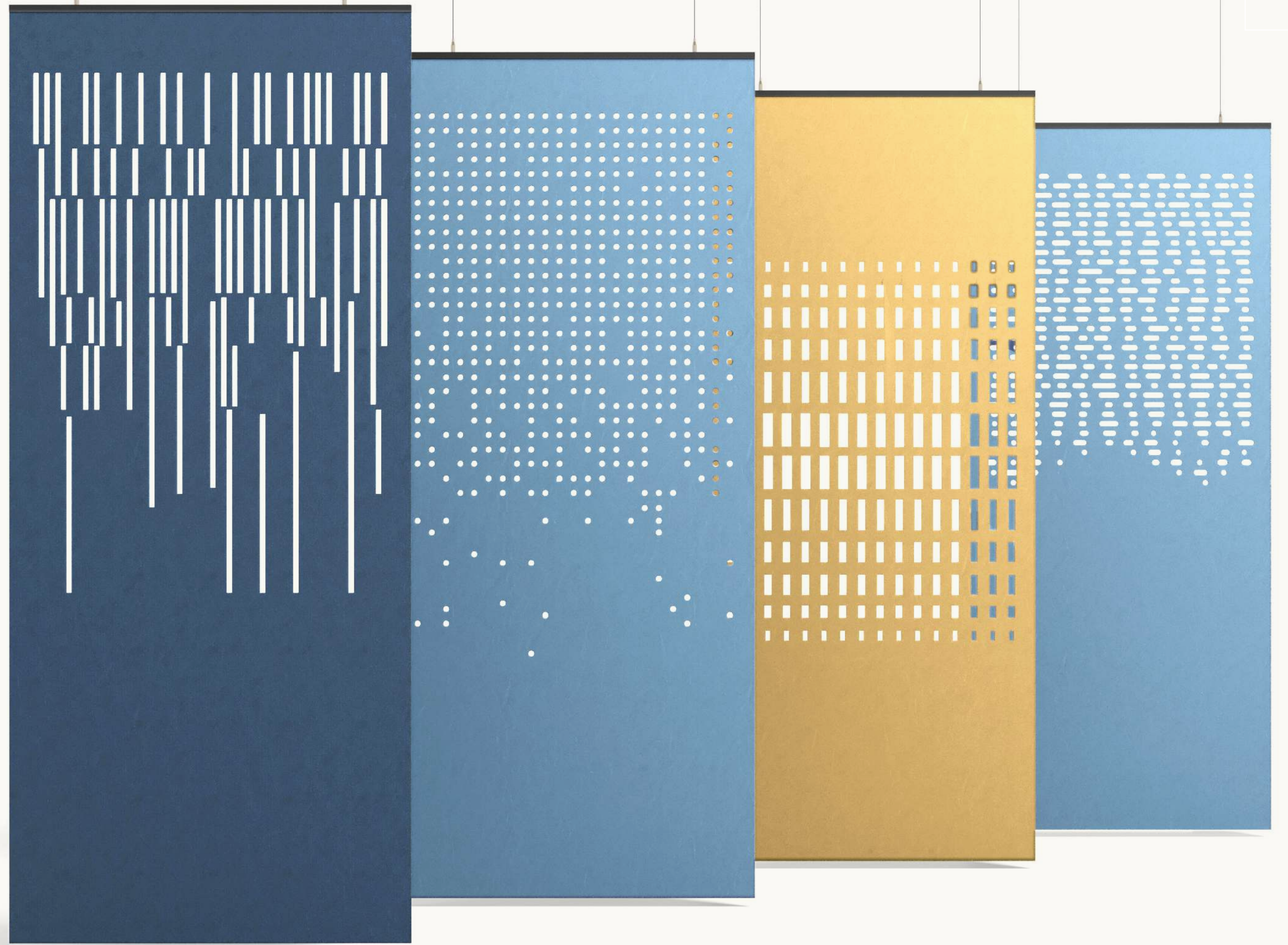
Fire rating

Certified to ASTM E84 class A, supporting safer interiors with proven flame-spread performance.



ACOUSTIC SOLUTION
FOR SPACES THAT
WORK BETTER

INSTALLATION



Acoustic Hanging

Acoustic hanging panels designed to define spaces and absorb sound, creating a calmer, quieter, and more open environment.

INSTALLATION



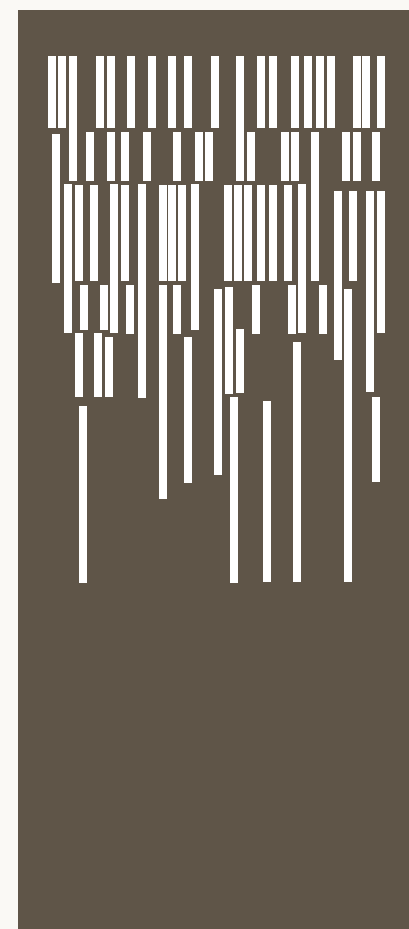
Acoustic Walls

Acoustic walls that transform plain walls into decorative sound-absorbing features for a calmer and more comfortable environment.

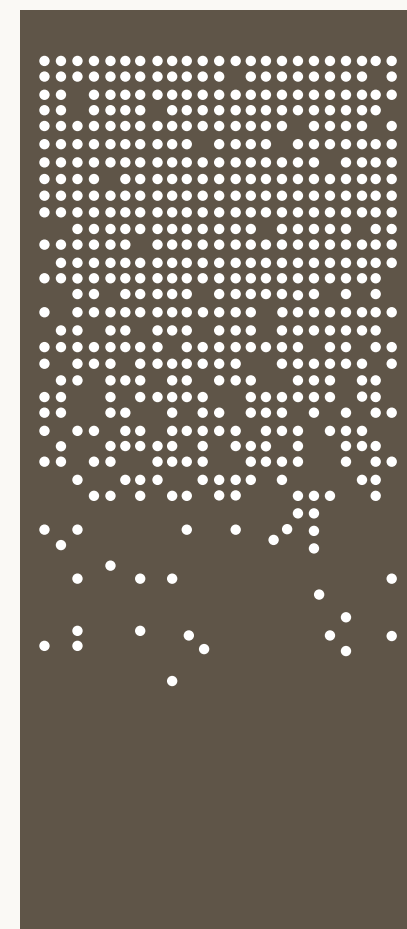
PERFORATED DESIGN COLLECTION

Acoustic panels with a perforated design stand out with refined perforated patterns that softly filter light, helping define zones and enhance privacy while keeping the space open and airy. The felt surface helps absorb sound and reduce reverberation, supporting focus and productivity. This design is intended for acoustic hanging installation.

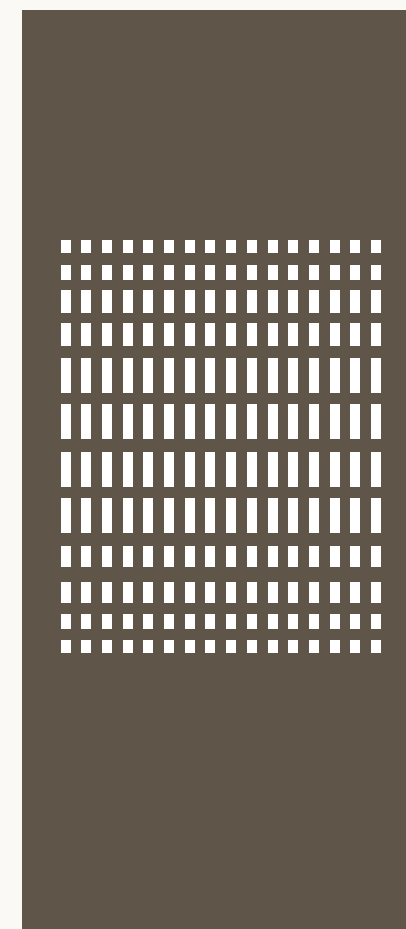
STANDARD



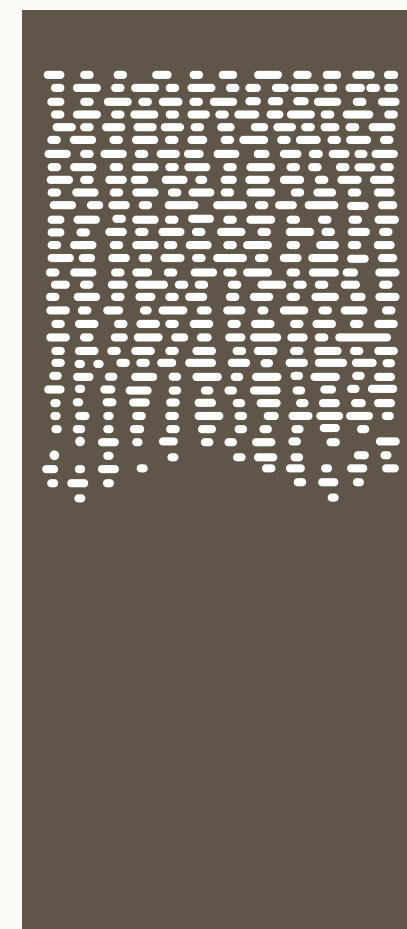
DESIGN : A



DESIGN : B

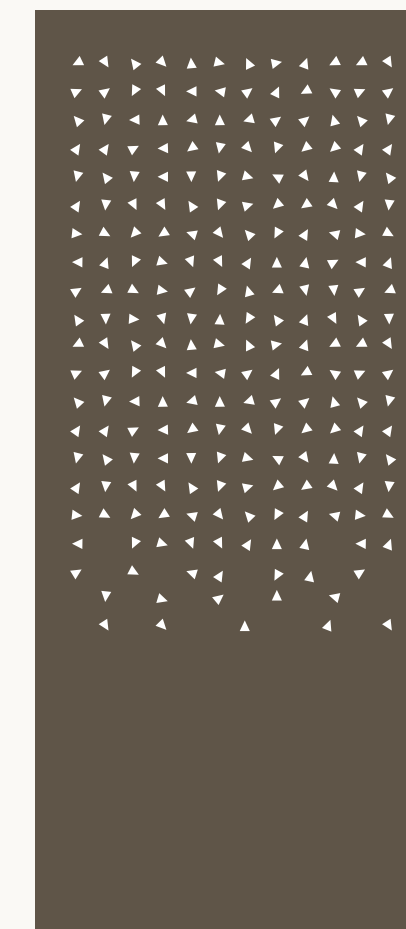


DESIGN : C

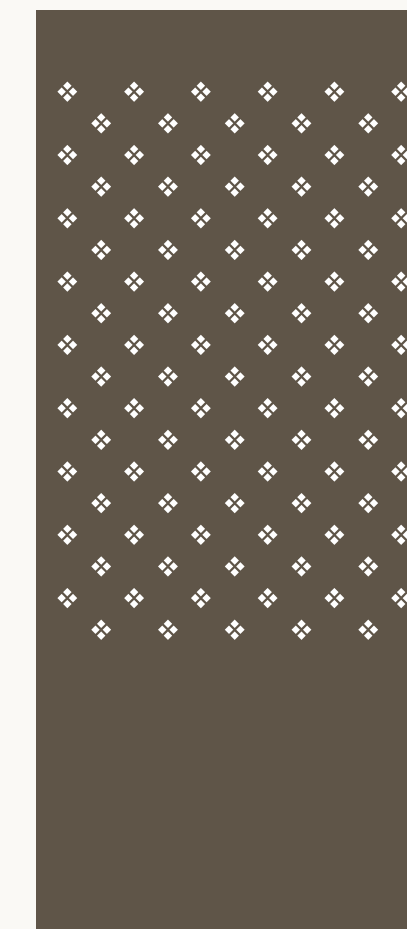


DESIGN : D

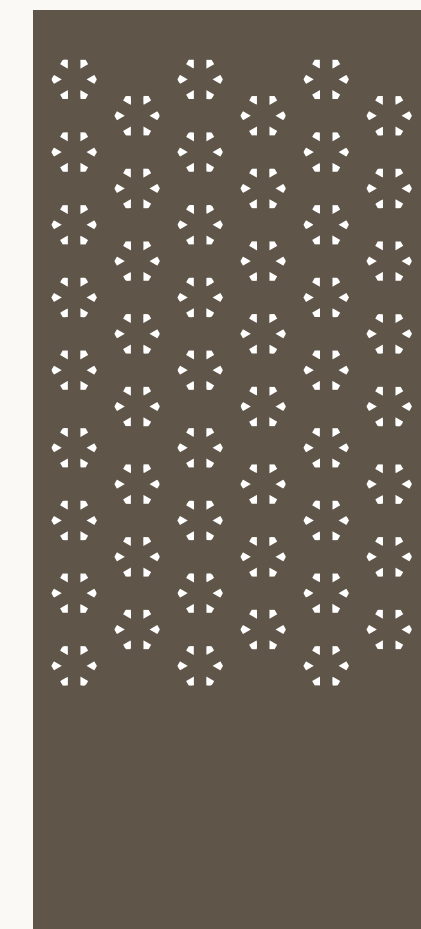
CUSTOM DESIGN



DESIGN : A



DESIGN : B



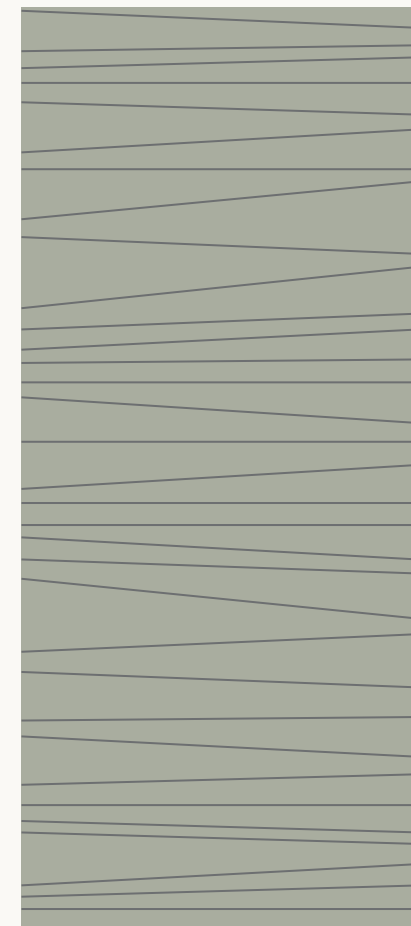
DESIGN : C



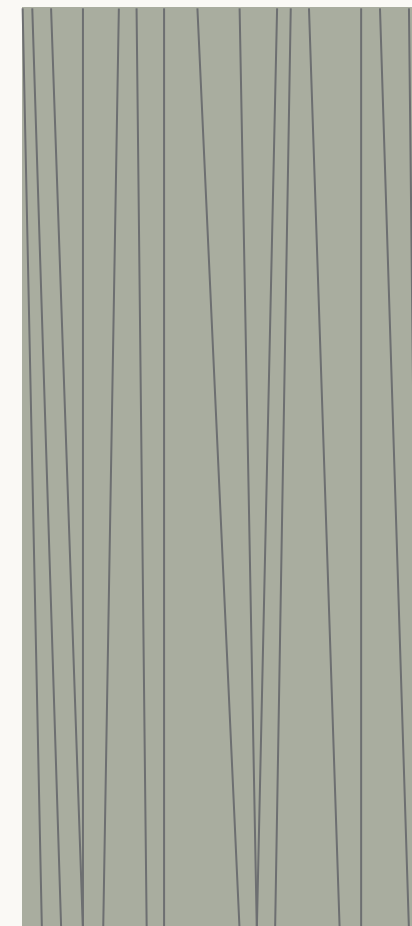
GROOVE DESIGN COLLECTION

Acoustic panels with a Groove design feature refined grooved detailing that creates a clean, modern pattern. The felt surface helps reduce sound reflection and reverberation, and can be installed as both acoustic hanging panels and acoustic wall applications.

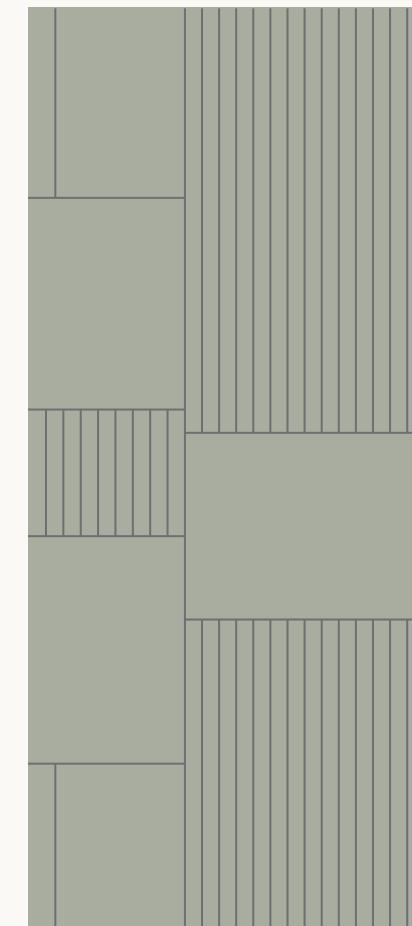
STANDARD



DESIGN : A



DESIGN : B

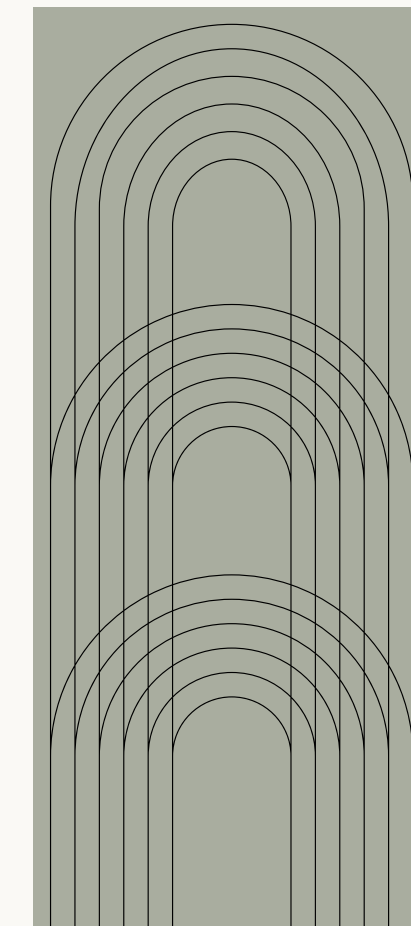


DESIGN : C

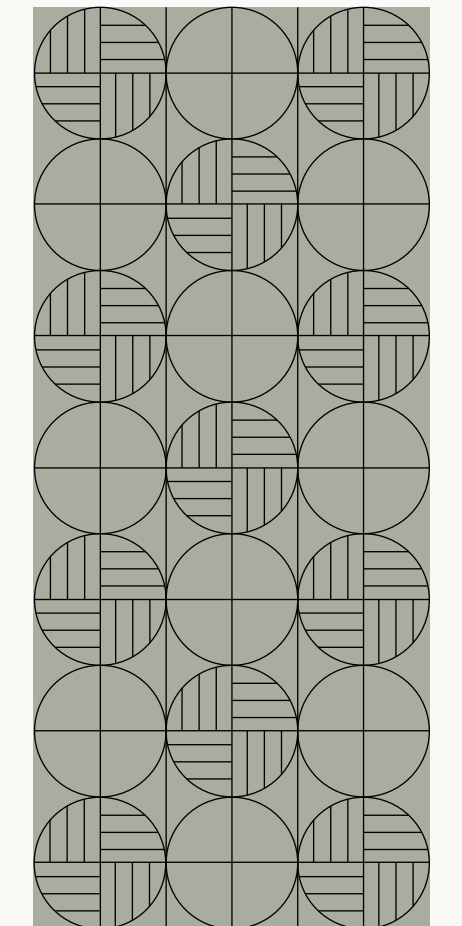
CUSTOM DESIGN



DESIGN : A



DESIGN : B



DESIGN : C

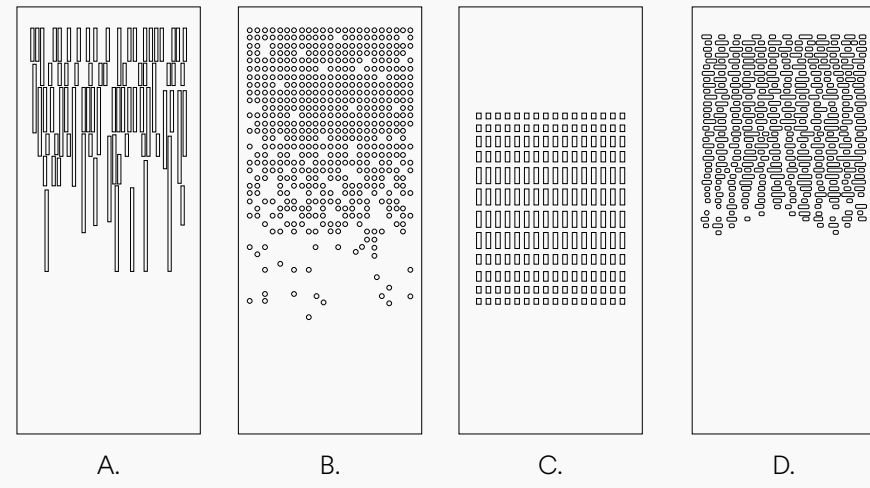




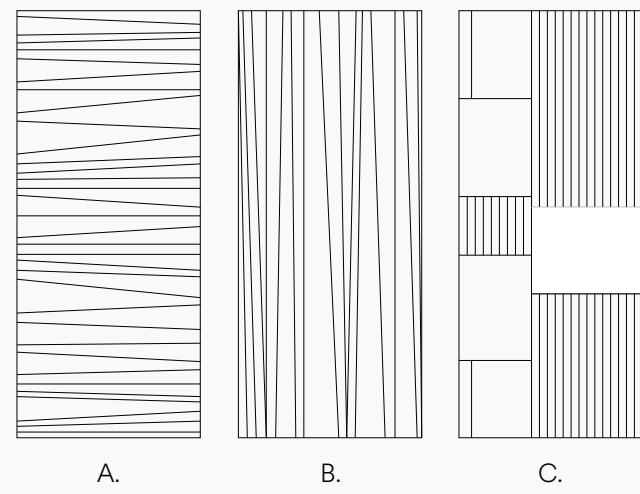
STATEMENT OF LINE

WARRANTY

Perforated design Collection



Groove design Collection



MEASUREMENT

NO.	ITEM	DIMENSION (MM)		
		H	D	W
1	ACOUSTIC PANEL	2750	12	1200

5 YEARS

AWARD & CERTIFIED

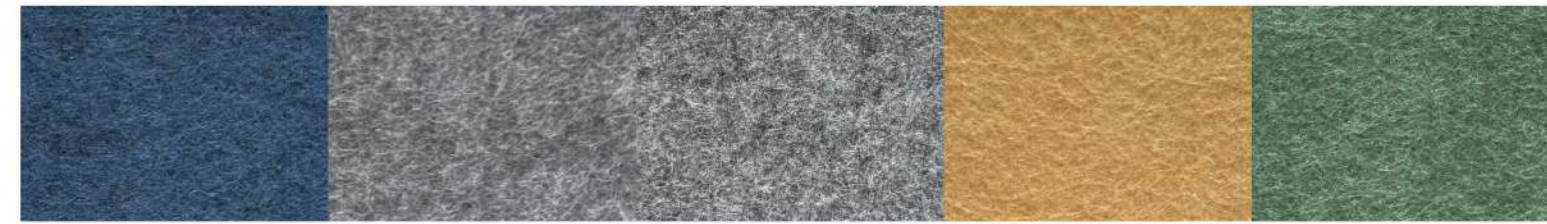


MATERIALS

Colors presented in the catalogue may vary from the original colors of furniture.



2122 GREY 2101 BLUE 2112 LIGHT BLUE 2118 RED 1903 BROWN



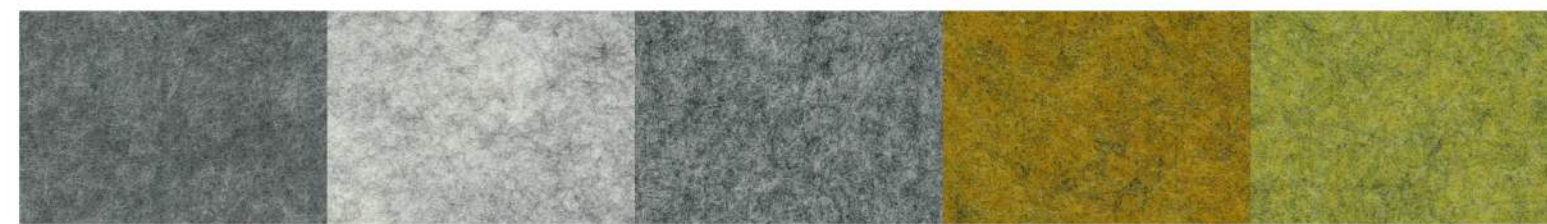
1907 DARK GREY 1912 SMOKE GREY 1914 STEEL GREY 2407 YELLOW 2414 GREEN



1901 1902 1903 1904 1906



1907 1908 1909 1910 1911



1912 1913 1914 1915 1916



1917 1918 1919 1920 1921



2101 2102 2103 2104 2105



2106 2107 2108 2109 2110



2111 2112 2113 2114 2115



2116 2117 2118 2119 2120



2121 2122 2123 2124 2125



2126 2127 2128 2129 2130



2131 2132

MATERIALS

Colors presented in the catalogue may vary from the original colors of furniture.



2401 2402 2403 2404 2405



2406 2407 2408 2409 2410



2411 2412 2413 2414 2415



2416 2417 2418 2419 2420



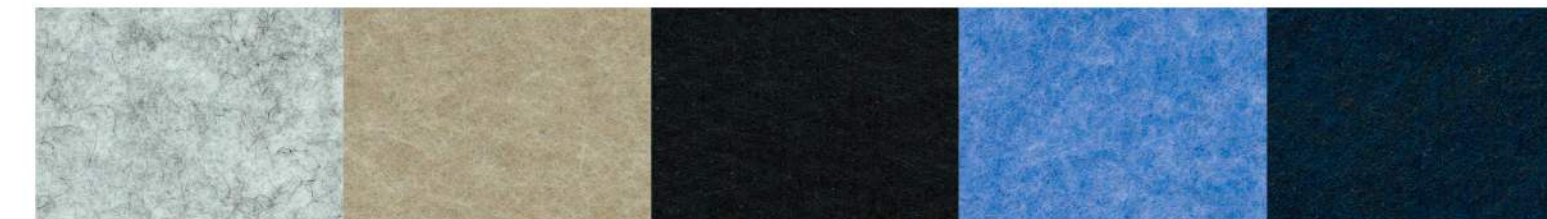
2421 2422



BZ-01 BZ-02 BZ-03 BZ-04 BZ-05



BZ-06 BZ-07 BZ-08 BZ-09 BZ-10



BZ-11 BZ-12 BZ-13 BZ-14 BZ-16



BZ-17 BZ-19 BZ-21 BZ-24 BZ-25



BZ-28 BZ-29 BZ-30 BZ-31 BZ-32



BZ-34 BZ-35 BZ-36 BZ-37 BZ-38



BZ-39 BZ-41 BZ-43 BZ-44 BZ-46

MATERIALS

Colors presented in the catalogue may vary from the original colors of furniture.



BZ-47

BZ-48

BZ-49

BZ-50

BZ-51



CBZ01

CBZ02

CBZ03

CBZ04

CBZ05



CBZ06

CBZ07

CBZ08

CBZ10

CBZ11



CBZ12

CBZ13

CBZ14

CBZ15

CBZ16



CBZ17

SUSTAINABILITY

Rockworth is committed to operating with integrity and responsibility in everything we do. Our value chain reflects our deep dedication to people and the planet, guiding our actions every day. Sustainability is not just a goal. It is embedded in our mindset, shaping the way we design, produce, and deliver solutions that create a positive impact on businesses, communities, and the environment.

Safe materials

The materials and raw components used in our production processes meet stringent quality standards. They are certified to ensure they pose no risk to human health or the environment.

Waste reduction

We actively minimize raw material waste throughout the design and production stages. Examples include precision computer-cut fabrics and leathers, as well as sourcing materials in clearly defined dimensions to optimize resource usage.

Energy efficiency

Reducing electricity consumption is a key priority for our company. We implement technical and organizational improvements and provide continuous training for employees to achieve this goal.

Waste segregation

For many years, we have successfully operated a structured waste segregation program, transferring sorted waste to authorized recycling partners. We actively encourage and educate our employees and the local community on effective waste segregation practices.

Environmental protection

We proactively identify and monitor potential environmental risks across all our operations. Our teams remain vigilant, prepared to respond effectively and responsibly whenever environmental threats arise.

CERTIFICATE

ISO 14002: 2015

Gives the requirements for environmental management systems, confirms its global relevance for organizations wishing to operate in an environmentally sustainable manner.

ISO 45001: 2018

Employees' health and safety in the workplace and improving the well-being of within the workplace environment.

ISO 9001: 2015

Quality management systems is a globally recognized standard for quality management. It helps organizations of all sizes and sectors to improve their performance.

ISO 50001: 2018

Energy management system: Makes it easier for organizations to integrate energy management into their overall efforts to improve quality and environmental management.

SCS Indoor air quality

Certify to the most transparent Indoor air quality (IAQ) standard for furniture and building materials with Indoor advantage and Indoor advantage gold.

Leadership in energy and environment

Based on accepted energy and environmental principles and strikes a balance between known established practices and emerging concepts.

Indian building council member

USGBC is best known for its development of the leadership in energy and environmental design (leed) green building rating systems.

**For more information about the product
Please scan the QR code.**



www.rockworth.com

**The producer reserves the right to conduct construction changes and improvements of the products.
Colors presented in the catalogue may vary from the original colors of furniture**